
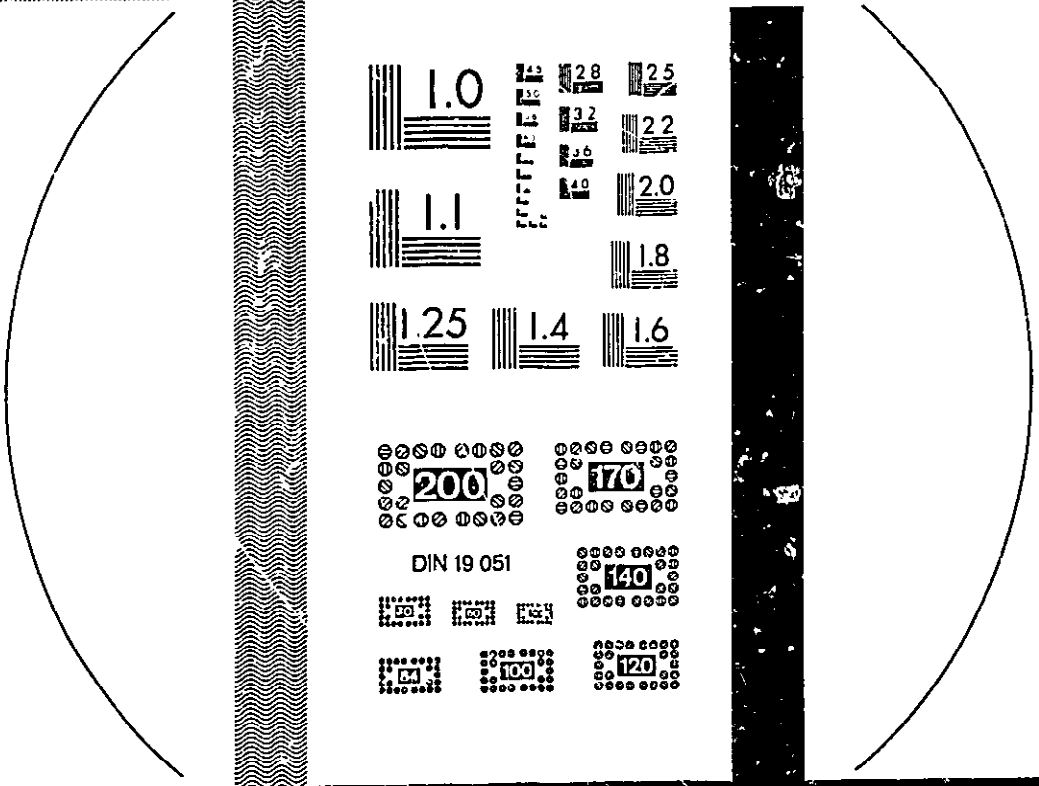
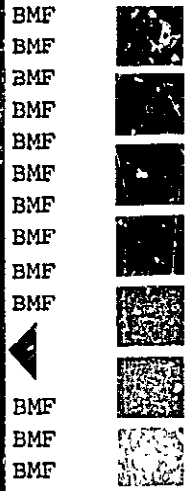
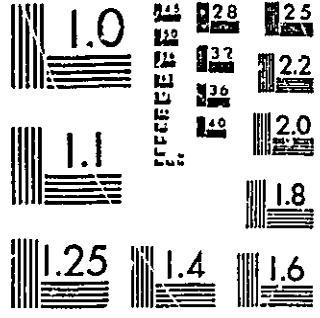
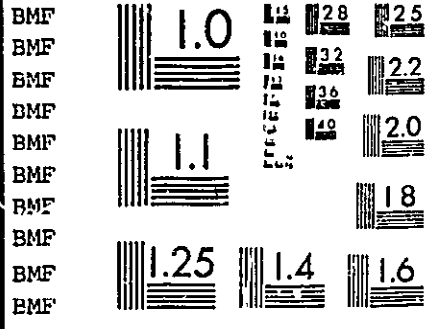
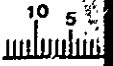
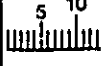
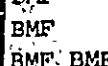
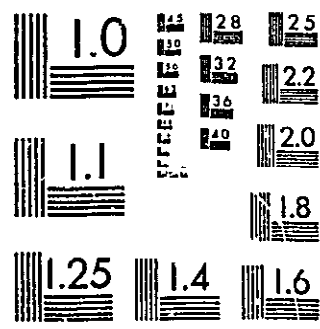


Testblatt
Feuille de vérification
Foglio di prova
1

Büfa  Mikrofilm Fachgruppe



100 mm



Masch. _____
No. _____
Zähler _____
Dat. _____ Sig. _____

LIST OF CONTENTS FICHE 1

CONCORDANCE OF FINDS WITH A DESCRIPTION OF FEATURES AND LAYERS

by MAUREEN MELLOR AND CLAIRE HALPIN

			Fiche
31-34 Church Street, Site A	Table 4		A3
Greyfriars Site B	Table 5		C12
Littlegate Site D	Table 6		F6
Selfridges Site SEL	Table 7		F11
Westgate Site W	Table 8		G2

A list of the abbreviations used in the Concordance Tables is given at the beginning of the Finds Reports in print. Photocopies of the microfiche can be obtained from the Oxford Archaeological Unit, 46 Hythe Bridge Street, Oxford, OX1 2EP.

A Concordance of Finds with a Description of Features and Layers

Table 4 , 31-34 Church Street (Site A)

Trial Trench

Feature	Layer	Type of Context	Stratigraphic Relationship	Pottery	Building Material	Glass	Animal Bone	Coin	Iron	Copper	Other Small Finds	Comments	Phase/Date
	L15										B(2)		
	L17								X				

The Main Excavation

F8		Stone footing	Overlies F1553, F1554, F2533, F2534, F2550	X	T		X					Associated with F2001, F2002, F2006, F2007, F2009, F2524, F2530, F2548(PH). On med and pm plans.	
F29		Stones	= F1011										14th C.
F46		Wall										Two phases. On med & pm plans.	
F49		Post hole		X			X					Not on phase plan.	15th C.
F49	L50	Stone packing									S		
F51		Stone slates	= F1014				X						15th C.
F53		Pit	Cuts F91, F92,	X			X					Section collapsed before total excavation.	15th C.
"	L45	F111	F96, F113, F119,				X	X	X(3)			Site plans show F53 cut by F1014, but good pot evidence indicates reverse is true.	
"	L53	"	F1007, F1014,		T			X	X(6)	B, L			
"	L137	"	F1037.				X						
"	L138	"	cut by F1(PH),							X			
"	L154	"	F52.										
"	L155	"	Overlain by										
"	L156	"	F42(PH) F50(PH).										
"	L157	"											
"	L158	"											
"	L159	"											
"	L160	"											
"	L161	"											

Table 4 , 31-34 Church Street (Site A)

Feature	Layer	Type of Context	Stratigraphic Relationship	Pottery Material	Building Material	Glass	Animal Bone	Coin	Iron	Copper	Other Small Finds	Comments	Phase/Date	
F59		Stone-lined pit.	Cuts F97, F108.	X	T							Published as being early 14th cent., <u>Oxonfiensia</u> , xxxiv (1969), 14-19, Pl. II.	14th C.	
"	L101	F111	Cut by F45 (PM), F68(PM). F111 between walls						X	X		Separate pot horizons, latest date taken.		
"	L179	Construc-												
"	L180	F111 between walls							X		S(2)			
F73		Pit?	Cut by F41(PM),									'Unexcavated', Not site note book. phased		
"	L92	F111	F76?								B			
F75		Pit?	Cuts F74	X			X					Uncertain relation to F1029.	13th C.	
"	L94	F111	Cut by F41(PM)											
"	L242	"												
"	L243	"							X					
F76		Pit?	= L103				X					'Unexcavated', Not site note book. phased		
"	L95	F111	Cuts F73? Cut by F41(PM)											
F77		Pit	Cuts F142, F144.	X	T		X					Relation to F121 uncertain.	13th C.	
"	L43	F111	Cut by F72(PM)			VG								
"	L96	"												
"	L122	"												
F79		Pit	Cuts F104, F142	X			X					Some intrusive 15th C. 17th-C. material.	15th C.	
"	L98	F111	F144, F145, F147.			VG								
"	L141	"	Cut by F56(PM)								B			
"	L165	"	F72(PM), F78(PM).											
F80		Pit		Y			X					Unrelated. Separate pot horizons, latest date taken.	15th C.	
"	L100	F111												
F83		Post hole?	Overlies F84				X					Associated with F153, F164, F513-F517 F520, F521.	12th C.	

Table 4 , 31-34 Church Street (Site A)

Feature	Layer	Type of Context	Stratigraphic Relationship—	Pottery	Building Material—	Glass	Animal Bone —	Coin	Iron	Copper	Other Small Finds	Comments	Phase/Date
F84		Pit	Cuts F502	X	T		X						11th C.
"	L1	F111	Overlain by F83		D								
"	L2	"											
"	L3	"			D								
"	L4	"			D								
"	L5	"											
"	L6	"			D				X				
"	L7	"											
"	L8	"											
"	L9	"			D				X(5)		R		
"	L10	"							X		B		
"	L11	"											
"	L12	"											
"	L13	"											
"	L14	"											
F85		Pit	= F121 L235	X	T		X					Relation to	14th C.
"	L145	F111	Cuts F87, F121.									F86? Confused excavation. Contamination from F66? Uncertain location.	
F86		Pit		X	T		X					Separate pot	14th C.
"	L146	F111									R	horizons, latest date taken. Uncertain relation to F85, F121.	
F87		Pit	Cut by F85				X					No drawing	14th C.
"	L133	F111										of this feature available. No pot. Latest date, based on stratigraphy, taken. Uncertain location.	
F89		Pit	Cut by F12(PM),	X			X						13th C.
"	L150	F111	F116?										
F90		Pit		X	T		X					Pig bones in	13th C.
"	L89	F111						X		X		F90, published as being pm. Conflicting dating evidence.	

Table 4 , 31-34 Church Street (Site A)

Feature	Layer	Type of Context	Stratigraphic Relationship	Pottery	Building Material	Glass	Animal Bone	Coin	Iron	Copper	Other Small	Comments	Phase/Date
F91		Post hole/pit	Cut by F53									Associated with hearths F1043-F1049? Location 111-recorded.	
"	L151	F111											
F92		Post hole/pit	Cut by F53	X								Associated with hearths F1043-F1049? Location 111-recorded. 13th-cent. sherd, residual.	
"	L152	F111											
F93		Pit	Cut by F98(FM), F102.	X									11th C.
"	L84	F111											
F94		Pit?	Cuts F115	X	T		X				B	'This is a doubtful pit', site notebook.	13th C.
"	L88	F111											
F95		Pit		X	T		X					Apparently unrelated	15th C.
"	L87	F111											
"	L164	"											
F96		Pit	Cut by F53	X			X					If any relation to F1007, F96 is cut by F1007 on pot evidence.	13th C.
"	L125	F111											
F97		Pit	Cuts F129 Cut by F45(PM) F59, F108, F146. L139 = L292	X	T		X				X(2)	'F97 cuts F146' inferred on site plans, but good pot evidence indicates reverse is true.	13th C.
"	L139	F111											
F99		Pit		X			X				R	Poor site records.	11th C.
"	L167	F111											
F100		Pit					X					Unrelated & no pot. 'Hearth', site records.	Not phased
"	L170	F111						X	X				
F101		Pit	Cut by F116? F131?	X	T		X		X			Poor site records. Mixed pot, latest date taken.	13th C.
"	L172	F111			D								

Table 4 , 31-34 Church Street (Site A)

Feature	Layer	Type of Context	Stratigraphic Relationship	Pottery Material	Building Material	Glass	Animal Bone	Coin	Iron	Copper	Other Small Finds	Comments	Phase/Date
F102		Pit	Cuts F93.	X	T		X						12th C.
"	L85	F111	Cut by F98(PM)										
F103		Pit	= F76	X			X					Apparently unrelated feature, this is unlikely. Near F116. Tentative date.	12th C.
"	L173	F111											
F104		Pit	Cut by F79										12th C.
"	L175	F111											
F105		Pit	Cuts F115, F124?	X	T		X					Relation to F117 uncertain.	13th C.
"	L86	F111											
F107		Pit	Cuts F115, F116, F118.	X	T		X						15th C.
"	L51	F111	Cut by F1(PM)		(D)								
"	L76	"											
"	L77	"											
"	L174	"											
"	L199	"											
"	L200	"											
"	L201	"											
"	L251	"									B		
"	L295	"											
"	L296	"											
"	L297	"											
F108		Pit	Cuts F97	X	T		X						13th C.
"	L136	F111	Cut by r59 Overlain by F45(PM).										
F109		Pit		X	T		X						13th C.
"	L181	F111								X(2)			
F110		Pit		X			X					Confused pot ignored. Suggested F110 or F111 cuts F513.	12th C.
"	L185	F111											

Table 4 , 31-34 Church Street (Site A)

Feature	Layer	Type of Context	Stratigraphic Relationship—	Pottery Material—	Building Material—	Glass	Animal Bone—	Coin	Iron	Copper	Other Small Finds	Comments	Phase/Date
F111		Pit		X	T							Recognised late in excavation. Suggested F110 or F111 cuts F513.	13th C.
"	L186	F111											
F112		Pit		X	T		X						12th C.
"	L187	F111											
F113		Pit	Cut by F1(PM)	X	T		X					Separate pot horizons, latest date taken. poor stratigraphy.	13th C.
"	L189	F111	F53, F121.						X				
"	L189a	"											
"	L190	"											
"	L191	"											
"	L192	"											
"	L193	"							X				
"	L194	"											
"	L194a	"											
"	L195	"											
"	L196	"											
"	L197	"							X				
"	L205	"											
"	L206	"											
"	L207	"											
"	L208	"											
"	L236	"											
"	L237	"											
"	L238	"											
"	L239	"											
"	L240	"											
F115		Pit	= F125	X	T		X					Coupled with F125 on site.	13th C.
"	L203	F111	Cuts F133						X	X		Uncertain relation to F123, F143.	
"	L210	"	Cut by F1(PM),										
"	L211	"	F94, F105, F107,										
"	L212	"	F117, F118.										
"	L213	"											
"	L214	"											
"	L215	"											
"	L216	"											

Table 4 , 31-34 Church Street (Site A)

Feature	Layer	Type of Context	Stratigraphic Relationship→	Pottery	Building Material→	Glass	Animal Bone→	Coin	Iron	Copper	Other Small Finds	Comments	Phase/Date
F116		Pit	Cuts F397, F101? X		T,D	VG	X		X(3)	X(2)	S	L1-L2, separate pit?	13th C.
"	L1	F111	F119, F130, F137, F502.						X			Separate pot	
"	L2	"							X			horizons, errors in	
"	L204	"	Cut by F1(PM),								S(2)	site recording,	
"	L204a	"	F107, F128, F131.		D							latest date	
"	L204b	"			(D)						S	taken.	
"	L204c	"									S	Relation to	
"	{L2049}	"										F14? uncertain.	
"	L232	"											
"	L233	"			D								
"	L234	"											
"	L264	F111											
"	L265	"											
"	L266	"											
"	L267	"			D								
F117		Pit	Cuts F115									Lack of	Not
"	L217	F111	Cut by F127									dating	phased
												evidence.	
F118		Pit	Cuts F115	X	T		X						14th C.
"	L118	F111	Cut by F107						X				
"	L231	"											
F119		Pit	Cuts F137	X	T		X					Some intrusive	11th C.
"	L219	F111	Cut by F1(PM),		(D)				X	X		13th- to 15th-	
"	L219a	"	F53, F1014.									cent. pot.	
"	L219b	"											
"	L220	"											
"	L221	"											
"	L222	"			(D)								
"	L223	"											
"	L224	"											
F120		Pit	Cuts F119	X			X						14th C.
"	L229	F111											
F121		Pit	Cuts F113, F124. X		T		X					Uncertain	14th C.
"	L235	F111	Cut by F82(PM),						X(2)	X(4)	S(2)	relation to	
"	L241	"	F85.									F77, F86.	
												F121 L235 =	
												F85.	
F122		Pit	Cut by F57(PM) X		T		X					Suggested F122	14th C.
"	L226	F111	F66(PM).									cuts F45(PM)	
"	L227	"										but good pot	
"	L228	"									S	evidence indi-	
												cates reverse	
												is true.	

Table 4 , 31-34 Church Street (Site A)

Feature	Layer	Type of Context	Stratigraphic Relationship	Pottery	Building Material	Glass	Animal Bone	Coin	Iron	Copper	Other Small Finds	Comments	Phase/Date
F123		Pit	= F125	X			X					By association with F125, F123 = F115.	13th C.
"	L210	F111											
F124		Pit	Cut by F105?	X	T		X					If related to F121 it is cut by this feature on pot evidence and site notes. Shown to be cut by F133 but good pot evidence indicates reverse is true.	13th C.
"	L244	F111	F121, F140, F141.										
"	L245	"	Overlain by F54 (PM),										
"	L246	"	F82(PM).										
"	L247	"											
"	L248	"											
"	L249	"							X				
"	L261	"											
"	L262	"											
"	L307	"											
F125		Pit	= F115, = F123.	X			X					Coupled with F115 during excavation.	13th C.
"	L250	F111											
F126		Pit	Cuts F127				X					Uncertain date, 12th-cent. onwards.	Not phased.
"	L252	F111											
"	L253	"											
"	L254	"											
F127		Pit	Cuts F117	X			X					Lack of dating evidence. L263 overlies L255, possibly fill of F127 site notebook.	Not phased.
"	L255	F111	Cut by F126										
"	L256	"											
"	L257	"											
"	L258	"											
"	L259	"											
"	L298	"											
F128		Pit	Cuts F116	X			X						13th C.
"	L260	F111											

Table 4 , 31-34 Church Street (Site A)

Feature	Layer	Type of Context	Stratigraphic Relationship—	Pottery	Building Material—	Glass	Animal Bone—	Coin	Iron	Copper	Other Small Finds	Comments	Phase/Date
F129		Pit	Cuts F151	X	T		X					Much PM pot	12th C.
"	(L103)	F111	Cut by F56(PM),									reattributed	
"	L104	"	F71(PM), F97,								S	to F149.	
"	L105	"	F145, F146, F148,									Extent of	
"	L106	"	F149(PM), F150,									feature not	
"	L107	"	F522(PM), F100G,									determined.	
"	L108	"	F1029.									Relation to	
"	L109	"										F1035 uncer-	
"	L110	"										tain, if any-	
"	L111	"										thing, on	
"	L112	"										good pot	
"	L113	"										evidence,	
"	L114	"										F129 is cut by	
"	L115	"										F1035.	
"	L116	"										F129 L203 =	
"	L117	"										F149(PM).	
"	L118	"											
"	L119	"											
"	L120	"											
"	L121	"											
F130		Pit	Cut by F116	X			X						11th C.
"	L268	F111			D						S(2)		
"	L269	"											
"	L270	"			D								
F131		Well	Cuts F101?	X	T		X					Not fully	13th C.
"	L271	F111	F116, F137, F1519.									excavated.	
"	L272	"	Cut by F132,									Uncertain	
"	L273	"	F1014.									relation with	
"	L274	"										F101, F138,	
"	L275	"										F139, F501.	
"	L276	"											
"	L277	"											
"	L278	"											
F132		Pit	Cuts F131, F137	X			X					Undated.	Not
"	L279	F111	Cut by F1014.									L283,	phased.
"	L280	"										variously	
"	L283	"										assigned to	
												F131, F132.	
F133		Well?	Cut by F1(PM)	X			X					F133 cuts F124,	11th C.
"	L281	F111	F115, F140.								B	F140, site	
"	L300	"										plans. Good	
"	L301	"										pot evidence	
"	L302	"										indicates this	
												cannot be so.	
F135													On med and pm plans.

Table 4 , 31-34 Church Street (Site A)

Feature	Layer	Type of Context	Stratigraphic Relationship—	Pottery Material—	Building Material—	Glass	Animal Bone—	Coin	Iron	Copper	Other Small Finds	Comments	Phase/Date
	L135				(D)				X(4)		B(3),R	L135 contains	Not
	L135/1								X		B(2)	much intrusive	phased
	L135/2											15th-cent pot.	
	L135/3								X(2)				
	L135/4								X				
	L135/8										B		
	L135/9										G		
	L135/c								X				
F137		Pit	Cut by F116, F119,									No pot.	11th C.
"	L284	F111	F131, F132, F138?									Stratigraphic	
"	L285	"	F1014.									phasing.	
F138		Pit	Cut by F139,	X			X					Weak pot	Not
"	L280	F111	F1038.									evidence.	phased.
"	L286	"										Separate pot	
"	L287	"										horizons.	
F139		Pit	Cuts F138.	X	T		X					Relation to	13th C.
"	L289	F111	Cut by F1038								S	F131, F1512	
"	L290	"										uncertain.	
F140		Pit	Cuts F124, F133.	X	T		X					Uncertain	13th C.
"	L291	F111	Cut by F55(PM).								S,L	relation to	
"	L303	"										F141. Poor	
"	L304	"										planning,	
"	L305	"			(D)				X			conjectura	
"	L306	"			D								
	L140								X				Not
													phased.
F141		Pit	Cuts F124	X	T		X					Relation to	13th C.
"	L294	F111	Cut by F55(PM)									F55 based on	
												pot evidence.	
												Uncertain	
												relation to	
												F140, F147.	
F142		Pit	Cut by F77, F79,				X					Surprising	13th C.
"	L312	F111	F144, F145.									lack of pot.	
F143		Pit		X			X					Relation to	13th C.
"	L313	F111									B	F115, F116	
												uncertain.	
F144		Pit	Cuts F142,	X			X					F144 cut by	13th C.
"	L314	F111	F145, F148.						X			F145, site	
"	L322	"	Cut by F71(PM),									plans, but	
"	L323	"	F77, F79.									good pot	
"	L324	"										evidence	
												indicates	
												reverse is	
												true.	

Table 4 , 31-34 Church Street (Site A)

Feature	Layer	Type of Context	Stratigraphic Relationship	Pottery Material	Building Material	Glass	Animal Bone	Coin	Iron	Copper	Other Small Finds	Comments	Phase/Date
F145		Pit	Cuts F151, F129, X				X					F145 cuts	13th C.
"	L142	F111	F142, F148.									F144, site plans, but	
"	L143	"	Cut by F56(PM),									good pot	
"	L309	"	F79, F144, F145.									evidence	
"	L315	"										indicates	
"	L316	"		(D)					X			reverse is	
"	L317	"								R		true.	
F146		Pit	Cuts F97, F129, X		T		X					F146 cut by	13th C.
"	L147	F111	F145, F151.									F97, inferred	
"	L318	"	Cut by F45(PM),									on site plans,	
"	L319	"	F56(PM).									but good pot	
"	L331	"										evidence indi-	
"	L332	"										cates reverse	
"	L333	"										is true.	
F147		Pit	Cut by F79	X	T		X					Suggested F147	13th C.
"	L320	F111										cuts F151 but	
"	L321	"										locations make	
												this impossible.	
												Uncertain rela-	
												tion to F141.	
F148		Pit	Cuts F129, F150. X									Contamination	12th C.
"	L325	F111	Cut by F71(PM),										
			F144, F145.										
F150		Pit	Cuts F129, F151. X										12th C.
"	L327	F111	Cut by F148.								B		
"	L328	"											
"	L329	"											
"	L330	"											
F151		Pit	Cut by F129, X		T		X					'Bottom of a	11th C.
"	L334	F111	F145, F146.							X		very cut about	
			F147? F150?									pit', site note-	
												book.	
F152		Pit		X								Uncertain	12th C.
"	L335	F111					X					location.	
												Near F66.	
												Not on phase	
												plans.	
F153		Post hole										Associated	12th C.
												with F83,	
												F164, F513-	
												F517, F520,	
												F521.	

31-34 Church Street, (Site A)

Feature	Layer	Type of Context	Stratigraphic Relationship	Pottery	Building Material	Glass	Animal Bone	Coin	Iron	Copper	Other Small Finds	Comments	Phase/Date
F154		Oven	Overlies F503,	X			X					Associated	13th C.
"	L348	F111	F506, F512.									with F155,	
"	L362	"	Overlain by							X		F158-F162,	
"	L370	"	F48(PM), F63									F165, F167	
"	L372	"	(PM), F507(PM). Cut by F161.									F169, F170, F518?	
F155		Timber Slot?										Associated with F154?	Not phased.
F156		Clay floor?	Overlies F503 Overlain by L2.	X			X					Abuts F46(PM) wall.	
F157		Pit	Cut by F70(PM)	X									13th C.
"	L336	F111							X	X			
F158		Wall?										Unlikely wall. Associated with F154?	Not phased.
F159		Hearth/ working surface.	Overlies F503									Associated with F154. Not on phase plan.	
"	L364	F111											
F160		Pit/post hole										Associated with F154? Not on phase plan.	
"	L344	F111											
F161		Pit/post hole	Overlies F512	X								Associated with F154? Not on phase plan. Residual pot.	
"	L345	F111	Cuts F154										
F162		Hearth?	Overlain by F62(PM).									Associated with F154? Not on phase plan.	
F163		Pebble floor	Overlain by L2									Uncertain date Associated with F46, F63.	15th C?
"	L353												
F164		Post hole	Overlies F502, F509.									Associated with F83, F513-F517, F520, F521.	12th C.
"	L352	F111	Overlain by F48(PM).										
F165		Floor?		X								Associated with F154?	13th C.
"	L357	F111											
F166		Area of charcoal										Unrelated	Not phased.

31-34 Church Street, (Site A)

Feature	Lrjer	Type of Context	Stratigraphic Relationship	Pottery	Building Material	Glass	Animal Bone	Coin	Iron	Copper	Other Small Finds	Comments	Phase/Date
F167		Stakehole?										Associated with F154 or F513-F517?	Not phased
"	L367	F111											
F168		Stakehole?					X					" "	Not phased
F169		Post hole										" "	Not phased
F170		Post hole					X					Associated with F154 or F513-F517?	Not phased
F171		Wall					X					On med and pm plans.	
	L350		Overlain by F156							X	S(2)	11th-, 13th- to 14th-C. pot	
	L354										R		
	L355										B		
	L356										L		
	L375										WF		
	L378								X				
F500		Pit	Cuts F510	Y	D		X		X			Confused with 11th C. F508-F510. Relation to F509 uncertain.	
F501		Pit	Cuts F505,	X	T, D?		X		X(2)		B(6),S	Mixed pot. 13th C. Relation to F131 uncertain.	
"	L1	F111	F1512, F1519,								B		
"	L2	"	F1520.										
F502		Ditch	= F504	X	T		X		X			Uncertain relation to 10th C. or earlier.	
"	L1	F111	Cut by F84, F116,		(D)						S,WF(6)	F518. Published, 'Excavations at Oxford 1970', Oxoniensia, xxxvi (1971), 5; Pl. 1.	
"	L2	"	F503, F506, F508,		(D)								
"	L3	"	F509, F510, F512, F520.		D								
			Overlain by F519.										

31-34 Church Street, (Site A)

Feature	Layer	Type of Context	Stratigraphic Relationship	Pottery	Building Material	Glass	Animal Bone	Coin	Iron	Copper	Other Small Finds	Comments	Phase/Date
F503		Pit	Cuts F502. Overlain by F156, F159.	X			X					Uncertain relation to F506.	12th C.
F504		Ditch	" F502	X	D		X					11th C. pot belongs to F84	10th C. or earlier
F505		Pit?	Cut by F501	X	T		X					No feature description. Relation to F501 uncertain.	12th C.
F506		Pit	Cut: F502 Overlain by F159.	X			X					Relation to F503 uncertain.	12th C.
F508		Pit	Cuts F502 Cut by F510	X								Some intrusive pot. See under F500 for finds.	11th C.
F509		Pit	Cuts F502, F510. Overlain by F164.									See under F500 for finds.	11th C.
F510		Pit	Cuts F502, F508. Cut by F500, F509.									See under F500 for finds.	11th C.
F512		Pit	Cuts F502, F519? Overlain by F63 (pm), F154, F161, F518.	X	D		X		X		B, R	Uncertain relation to F518. Confusion with F519.	10th C. or earlier
F513		Post hole	Cut by F110 or F111? Overlain by F65(pm).									Associated with F83, F153, F164, F513-F517, F520. Published <u>Oxonfensia</u> , xxxv (1970), Pl. II.	12th C.
F514		Post hole	Overlain by F65(pm).									" "	12th C.

31-34 Church Street, (Site A)

Feature	Layer	Type of Context	Stratigraphic Relationship	Pottery	Building Material	Glass	Animal Bone	Coin	Iron	Copper	Other Small Finds	Comments	Phase/Date
F515		Post hole	Overlain by F64(pm)										12th C.
"	L1	F111											
F516		Post hole	Overlain by F62(pm), F64(pm).				X						12th C.
F517		Post hole	Overlain by F62(pm), F135(pm).	X									12th C.
"	L1	F111										13th C. sherd intrusive.	
F518		Pit	Overlies F512? Overlain by F154.	X			X					Uncertain relation to F502, F512.	11th C.
"	L1												
F519		Road surface	Overlies F502	X			X					Confusion with F512.	10th C. or earlier.
"	L1		Cut by F512										
"	L2				(D)						S		
F520		Post hole?	Cuts F502 Overlain by F61(pm).									Associated with F83, F153, F164, F513-F517, F521.	12th C.
F521		Post hole	Overlain by F46 (pm).									Associated with F83, F153, F164, F513-F517, F520.	12th C.
F522		?	Originally part of F44(pm).									Number created to accommodate L202, L209 layers from F44(pm).	Not phased
F1003		Pit	Overlies F1036, F1041.	X	T		X		X			Cuts F1004, F1527, based on pot evidence.	13th C.
"	L1010	F111											
"	L1027	"	Cuts F1516, F1527.		(D), AS						S(AS)		
"	L1028	"	Cut by F1023(pm).										
F1004		Pit?		X			X					Part of F1036? Relation to F1041? Confused excavation.	12th C.
"	L1039	F111											

31-34 Church Street, (Site A)

Feature	Layer	Type of Context	Stratigraphic Relationship	Pottery	Building Material	Glass	Animal Bone	Coin	Iron	Copper	Other Small Finds	Comments	Phase/Date
F1006		Pit	= F1008	X	T, D		X					Coin,	15th C.
"	L1053	F111	Cuts F129, F1007,							X	R	suggested	
"	L1054	"	F1012, F1031,							X(2)	B	deposition	
"	L1062	"	F1034, F1037							X(2)	L, WF	date before	
"	L1063	"	F1048, F1517?					X	X(3)			c. 1400.	
"	L1096	"	Cut by F71(pm).										
"	L1097	"											
"	L1100	"									S		
"	L1105	"											
"	L1106	"							X				
"	L1107	"											
"	L1108	"											
"	L1109	"			(D)								
"	L1111	F111											
"	L1124	"											
"	L1125	"											
"	L1126	"											
"	L1132	"											
"	L1133	"											
"	L1136	"											
F1007		Pit	Cuts F1515	X	T		X					Not fully	13th C.
"	L1055	F111	Overlain by F1037		(D)	WG						excavated.	
"	L1078	"	Cut by F53, F1006,									Confused	
"	L1103	"	F1012, F1031.							X		excavation of	
"	L1110	"	Includes F1027.									F1007 & F1027.	
"	L1134	"										Contaminated.	
												Cuts F96 on	
												pot evidence.	
F1008		Pit	= F1006		T	WG	X					Not on phase	15th C.
"	L1054	F111										plan. Possibly	
												a separate pit,	
												some finds with	
												F1006.	
F1011		Pit	= F29	X	T		X					Highly confused	14th C
"	L21	F111	Cuts F1018, F1028.									excavation.	
"	L22	"	Cut by F14(pm),									Suggested F1011	
"	L1022	"	F1021.									overlies F1021	
"	L1023	"										but locations do	
"	L1024	"										not tally.	
"	L1075	"											
"	L1077	"											
"	L1079	"											
"	L1081	"											
"	L1082	"											
"	L1083	"											
"	L1084	"											
"	L1085	"											

31-34 Church Street, (Site A)

Feature	Layer	Type of Context	Stratigraphic Relationship	Pottery	Building Material	Glass	Animal Bone	Coin	Iron	Copper	Other Small Finds	Comments	Phase/Date
F1012		Stones	Cuts F1007, F1031, F1037. Cut by F1006.	X								Not on phase plan. Suggested associated with F1048.	14th C.
"	L1052												
F1013		Pit	Cuts F1015, F2521	X			X						14th C.
"	L1088	F111	Cut by F14(pm).								B		
F1014		Pit	= F51	X	T		X					F1014 cuts F53, site plans, but good pot evidence indicates reverse is true. L1090 = L1047.	15th C.
"	L1090	F111	Cuts F119, F131, F132, F137, F1032,						X(2) X(3)		B(2), S(2)		
"	L1142	"	F1033, F1038,										
"	L1145	"	F1040, F1054,										
"	L1146	"	F1519, F1522,										
"	L1152	"	Cut by F53,										
"	L1154	"	F1030B.										
F1015		Pit	Cuts F2517,	X			X						14th C.
"	L1030	F111	F2521.										
"	L1093	"	Cut by F1013.							X	S		
F1016		Pit	Cuts F1024	X			X					Some confusion during excavation with F1024.	13th C.
"	L1086	F111	Underlies F40										
"	L1087	"	(pm).								S		
"	L1094	"											
"	L1098	"											
"	L1104	"											
"	L1121	"							X				
F1017		Pit	Cuts F1030 A or B									Possibly PM. Not on phase plan.	Not phased.
"	L1101	F111	Cut by F60(pm).										
F1018		Pit	Cuts F1028	X	T		X					Cuts F2503? Cut by F1019?	13th C.
"	L1039	F111	Cut by F1011			WG							
"	L1123	"											
"	L1207	"											
"	L1208	"											
"	L1209	"											
"	L1210	"											
"	L1264	"											
"	L1265	"											
"	L1266	"											
"	L1267	"											
"	L1269	"											

31-34 Church Street, (Site A)

Feature	Layer	Type of Context	Stratigraphic Relationship	Pottery	Building Material	Glass	Animal Bone	Coin	Iron	Copper	Other Small Finds	Comments	Phase/Date
F1019		Pit	Cuts F1018,	X	T, D		X					Pot from F1051 14th C.	
"	L1035	F111	F1028, F1051,									L1229 sent in	
"	L1036	"	F1501, F1516.									with F1019.	
"	L1102	"	F1527. Cut by							X(3) X(2)	R	F1019 cuts	
"	L1204	" = L1257	F1001(pm).									F1516 based on	
"	L1228	"										good pot	
"	L1229	= F1051										evidence.	
"	L1255	"											
"	L1256	"											
"	L1257	"											
"	L1258	"											
F1020		Pit	Cuts L1031	X			X						13th C.
"	L26	F111											
"	L1112	"											
F1021		Pit	Cuts F1011	X	T		X					Uncertain	14th C.
"	L1076	F111	Cut by F14(pm)			VG						Location.	
"	L1114	"										Confused	
												excavation.	
F1022		Pit	Cuts F1030A,	X	T	VG	X	X	X	X	S	Confused with	15th C.
"	L1	F111	F1032, F1510,									F1030. Coin,	
"	L1119	"	F1511, F1557.							X		suggested	
"	L1277	"										deposition	
												possibly	
												c. 1320-30.	
												Residual.	
F1024		Pit	Cuts F1035	X	T		X					Some confusion	13th C.
"	L1095	F111	Cut by F1016									during excava-	
"	L1099	"									S	tion with F1016.	
"	L1128	"											
"	L1129	"											
"	L1130	"											
"	L1131	"											
"	L1231	"											
"	L1245	"			(S)	VG			X				
F1025		Pit		X	T							Poorly recorded	13th C
"	L1091	F111										On pot evidence	
"	L1181	"										pre-dates F1007.	
F1026		Pit	Cuts F1037	X			X					Confused	14th C.
"	L1069	F111										excavation.	
F1027			= F1007										

31-34 Church Street, (Site A)

Feature	Layer	Type of Context	Stratigraphic Relationship	Pottery	Building Material	Glass	Animal Bone	Coin	Iron	Copper	Other Small Finds	Comments	Phase/Date
F1028		Pit	Cut by F1011,	X			X					Some residual	12th C.
"	L1080	F111	F1018, F1019,								R	10th-C. pot.	
"	L1089	"	F2503, F2515.										
"	L1140	"											
"	L1141	"											
"	L1148	"											
"	L1149	"											
"	L1150	"											
"	L1170	"											
"	L1261	"											
"	L1262	"											
"	L1263	"											
F1029		Pit	Cuts F129, F1034,	X	T		X					Uncertain	13th C.
"	L1137	F111	F1035.									relation to	
"	L1138	"										F75.	
F1030A		Pit	Cuts F1511, F1521,	X	T		X					Contains many	15th C.
"	L1143	F111	F1557, F2521.						X(3)			more layers.	
"	L1219	"	Cut by F1022						X(3)			Confused	
"	L1247	"										excavation,	
"	L1248	"										F1030A & F1030B.	
"	L1249	"									S		
F1030B		Pit	Cuts F1014, F1518,									Confused	15th C.
			F1522.									excavation,	
												pot assigned	
												to F1030A.	
F1031		Pit	Cuts F1007, F1034	X	T		X					Suggested	13th C.
"	L1151	F111	F1515, F1517.								B	overlain by	
			Cut by F1006,									F1037, F1043,	
			F1012.									F1044, F1048.	
												Some confusion,	
												site drawings,	
												with F1034.	
F1032		Hearth	Cuts F1511									Probably	14th C.
"	L1059		Overlies F1033									associated	
"	L1169		Cut by F53,									with F1043 -	
			F1014, F1022.									F1049.	
F1033		Pit	= F1511	X			X					Coupled with	13th C.
"	L1155	F111	Cut by F1014,									F1511 during	
"	L1156	"	F1030A or B.									post excava-	
"	L1157	"	Overlain by									tion.	
"	L1158	"	F1032.										
"	L1159	"											
"	L1160	"											
"	L1161	"											
"	L1162	"											
"	L1163	"											
"	L1168	"											
"	L1211	"	= L1276 con:										

31-34 Church Street, (Site A)

Feature	Layer	Type of Context	Stratigraphic Relationship	Pottery	Building Material	Glass	Animal Bone	Coin	Iron	Copper	Other Small Finds	Comments	Phase/Date
F1033	L1272	F111											
"	L1273	"											
"	L1274	"											
"	L1275	"											
"	L1276	" = L1211											
F1034		Pit	Cut by F1006,	X	T		X					Relation to	13th C.
	L1167	F111	F1029, F1031.									F1031 uncer-	
	L1174		Overlain by									tain. Some	
	L1175		F1037.									confusion,	
	L1176											site drawings,	
	L1177											with F1031.	
	L1178												
	L1179												
	L1180												
F1035		Pit	Cuts F1042	X	T		X						13th C.
"	L1057	F111	Cut by F1024,										
"	L1185	"	F1029.										
"	L1186	"											
"	L1198	"					X						
"	L1199	"					X						
"	L1200	"											
"	L1201	"											
"	L1206	"			D		X						
"	L1245	"											
"	L1250	"											
"	L1251	"											
"	L1252	"					X		X(2)				
F1036	Pit	Cuts F1041		X	T		X					Uncertain	12th C.
"	L1173	F111	Overlain by									relation to	
"	L1182	"	F1003									F1004. Poor	
"	L1183	"										location.	
"	L1184	"			(D)								
"	L1202	"											

31-34 Church Street, (Site A)

Feature	Layer	Type of Context	Stratigraphic Relationship	Pottery	Building Material	Glass	Animal Bone	Coin	Iron	Copper	Other Small Finds	Comments	Phase/Date
F1037		Spread of	Overlies F1007,	X	T		X					Associated with F1043-F1049?	14th C.
"	L1060	yellow	F1031, F1034,					X				Suggested F1037 over-	
"	L1068	clay.	F1503, F1510, F1515, F1557, F1561. Cut by F53, F1006, F1012, F1026.			WG				X(2)		lies F1022 but this cannot be so on stratigraphic and pot evidence. Not shown on phase plan. Coin, suggested deposition before c.1300. Pot could be late 13th C.	
F1038		Pit	Cuts F138, F139.	X			X					Uncertain relation to F1060. Cuts F139 on good pot evidence. Other relations based on site notebook. Coin, suggested deposition early 14th C.	14th C.
"	L1187	F111	Cut by F1014,										
"	L1188	" = L1282	F1039.					X		X(2)	WF		
"	L1189	"											
"	L1190	" = L1193											
"	L1191	"											
"	L1193	" = L1190											
"	L1194	"											
"	L1195	"											
F1039		Pit	Cuts F1038									Large pit, Not surprising lack of pot. 'Cut by F1030', site notebook.	phased.
"	L1196	F111											
"	L1197	"											
F1040		Pit	Cut by F1014,	X			X					No drawings, 12th C. uncertain location.	
"	L1223	F111	F1030 A or B.	X									
"		= L1205											
"	L1224	"											
"	L1225	"											
"	L1226	"											
"	L1227	"											

31-34 Church Street, (Site A)

Feature	Layer	Type of Context	Stratigraphic Relationship	Pottery	Building Material	Glass	Animal Bone	Coin	Iron	Copper	Other Small Finds	Comments	Phase/Date
F1041		Pit	Cut by F1036	X			X					'Recognised in the side of another pit', site notebook. Uncertain relation to F1004.	12th C.
"	L1232	F111	Overlain by F1003										
"		= L1203											
"	L1234	"											
"	L1235	"											
"	L1236	"											
"	L1237	"											
"	L1238	"											
"	L1239	"											
"	L1240	"											
"	L1241	"											
"	L1242	"											
"	L1253	"											
F1042		Pit	Cut by F1035				X					'Recognised in the side of another pit', site notebook. Cut/under F1035. No pot, stratigraphically latest date taken.	13th C.
"	L1244	F111											
	L1043							X				Coin, late 15th-C. jetton.	Not phased.
F1043		Hearth	Overlies F1031 Overlain by F1037									Likely F1032, F1043-F1049 are all associated. Overlain by F1037.	14th C.
F1044		Hearth	Overlies F1031 Overlain by F1037										14th C.
F1045		Hearth	Overlies F1515 Overlain by 1037										14th C.
F1046		Hearth	Overlies F1503, F1515. Overlain by F1037										14th C.
F1047		Hearth	Overlies F1510 Overlain by F1037										14th C.
F1048		Working surface/ floor = F1049	Overlies F1007, F1031, F1034, F1503, F1515, F1517, F1557, Cut by F1006. Overlain by F1037	X			X					Recorded, 'hearths F1043-F1047 were set in F1048'.	14th C.

31-34 Church Street, (Site A)

Feature	Layer	Type of Context	Stratigraphic Relationship	Pottery	Building Material	Glass	Animal Bone	Coin	Iron	Copper	Other Small Finds	Comments	Phase/Date
F1049		Working surface/floor. = F1048	Overlies F1055, F1510, F1515. Overlain by F1037.				X						
F1050	L1246	Shallow depression/pit.					X					'Cut by F1034 and F1035?', site notebook. Uncertain relation F1023(pm) and F1029.	Not phased.
F1051	L1229	Pit F111	Cuts F1052, F1501, F1503.	X					X		S	Some confusion with F1527. Pot from F1051 L1229 sent in with F1019.	13th C.
"	L1230	"	Cut by F1001(pm)										
"	L1254	"	F1019.										
"	L1259	"											
"	L1260	"											
F1052		Pit	Cut by F1051				X					'Recognised in the side of another pit', site notebook. No pot, latest date (stratigraphically) taken.	13th C.
F1053	L2	Pit F111	Cut by F1007, F1031, F1055.	X			X				L	Few sherds. F1515, not F1053, shown on phase plans.	12th C.
"	L1270	"	= F1515						X				
F1054	L1271	Well?	Cut by F1014				X					'A well', site notebook. Not fully excavated. Contaminated.	15th C
F1055	L1278	Pit F111	Overlain by F1049	X			X					Uncertain relation to F1510.	13th C.
F1057	L1	Pit F111	Overlies F1540, F2520, F2538, F2551. Cut by F1059.	X	T	WG						'An oven', site notebook.	15th C.
"	L2	"			(D)				X(2)	X	S, W*		
F1059	L1	Pit? F111	Cuts F1057	X			X					Poor feature. Uncertain location.	15th C.
"	L2	"								X	S		

31-34 Church Street, (Site A)

Feature	Layer	Type of Context	Stratigraphic Relationship	Pottery	Building Material	Glass	Animal Bone	Coin	Iron	Copper	Other Small Finds	Comments	Phase/Date
F1060		Hearth	Overlies F1502				X					L1283 area of charcoal including F1060. F1060 may be associated with F1061.	Not phased
F1061		Burnt area					X					No location, no drawing. May be associated with F1060.	Not phased.
F1063		Stake hole	Overlain by F43(pm).				X					May cut F1526 or F1530, or both. Associated with F513-F517 etc.	12th C.
L1080		Sandy gravel	Cut by F1011							X			Not phased.
L1279		= L2, PM.											Unstratified
L1282		= F1038 L1188										See F1038 L1188.	14th C.
F1501		Pit	Cut by F1001(pm)	X									11th C.
"	L1	F111	F1019, F1051, F1503, F1527.				X		X				
F1502		Hearth	Overlies F1507, F1522.		T							F1502, F1504-F1508, F1512, F1060, F1061, Hearths, closely associated.	13th C.
"	L1		Overlain by F1060										11th-14th C.
"	L2												
F1503		Pit	Cuts F1501, F1557. Cut by F1051, F1515, F1527. Overlain by F1037, F1046.	X	T							Some intrusive pottery. Poor site records, but good pot evidence indicates F1503 is cut by F1515.	11th C.
"	L1	F111					X		X		R		
"	L2	"			D		X				B(2)		
F1504		Hearth?	Overlies F1534				X						13th C.

31-34 Church Street, (Site A)

Feature	Layer	Type of Context	Stratigraphic Relationship	Pottery	Building Material	Glass	Animal Bone	Coin	Iron	Copper	Other Small Finds	Comments	Phase/Date
F1505		Burnt earth		X								Shown between F1504 and F1506, but not numbered on phase plan.	13th C?
F1506		Semi circle of burnt stones.	Overlies F1534, F1538, F1540, F2551.									Associated with F1508?	13th C.
F1507		Hearth	Overlain by F1502										Not phased.
F1508		Walling	Overlies F1538, F1540.									Associated with F1506?	13th C.
F1509		Pit?		X	T		X					Formerly F2509. Confused excavation, see also F1553, F1554.	13th C.
"	L1	F111											
"	L2	"									S		
"	L3	"									S		
"	L4	"											
"	L5	"											
"	L6	"											
"	L13	"							X				
F1510		Pit	Cut by F1022	X	T						L	Uncertain relation to F1055.	13th C.
"	L1	F111	Overlain by F1037, F1047.				X						
"	L2	"	Overlies F1055.				X						
F1511		Pit	= F1033	X	T						L	mixed pottery. Coupled with F1033 during post excavation.	13th C.
"	L1	F111	Cut by F1022,				X		X				
"	L2	"	F1030A.		(D)		X						
"	L3	"											
F1512		Hearth	Overlies F1520	X								Associated with F1060, F1061, F1502, F1507.	13th C.
"	L1		Cut by F501								X	Relation to F139 uncertain.	
"	L2												
"	L3												
"	L4												
F1513		Pit	Cuts F2503, F2521	X								F1513 cuts F2521, site plans. Early 13th C. pot residual.	Not phased
"	L1		Cut by F41(pm)				X						
"	L2												
"	L3									X		F1513, mid 13th C. +	

31-34 Church Street, (Site A)

Feature	Layer	Type of Context	Stratigraphic Relationship	Pottery	Building Material	Glass	Animal Bone	Coin	Iron	Copper	Other Small Finds	Comments	Phase/Date
F1514		Pit		X								Contamination. Uncertain location.	12th C.
"	L1	F111					X						
"	L2	"					X						
F1515		Pit	= F1053	X	T							R(2)	12th C.
"	L1	F111	Cuts F1503, F1557.				X		X				
"	L2	"	Cut by F1007,				X		X				
"	L3	"	F1031, F1517. Overlain by F1037, F1045, F1046.				X		X				
F1516		Pit	Cuts F1527, F2515, F2553.	X	T						L	Some confusion with F2553. On pot evidence: cuts F2516, cut by F1019. Relation to F1003, F2529 uncertain.	13th C.
"	L1	F111				WG, VG(2)	X						
"	L2	"	Cut by F17(pm), F1019.		(D)		X		X				
"	L3	"					X						
F1517		Pit	Cuts F1515	X	T							13th C.	
"	L1	F111	Cut by F1006?		D		X		X				
"	L2	"	F1031.		(D)		X			X			
F1518		Pit	= F1523	X	T							11th C.	
"	L1	F111	Cut by F1030B, F1522.				X						
"	L2	"					X						
"	L3	"					X						
"	L4	"					X						
F1519		t	Cuts F1522	X								Poor site records. Majority of relations based on pot evidence. Uncertain relation to F1520.	11th C.
"	L1	F111	Cut by F131, F501, F1014.		D		X		X				
"	L2	"					X		X				
"	L3	"					X		X				
"	L4	"					X						
F1520		Pit	Cut by F501	X								11th C.	
"	L1	F111	Overlain by				X			X			
"	L2	"	F1512.				X		X				
"	L3	"			D		X						
F1521		Pit	Cuts F1534.	X	T							11th C.	
"	L1	F111	Cut by F1030A?				X						
"	L2	"	F1533, F2571.				X						
"	L3	"					X						

31-34 Church Street, (Site A)

Feature	Layer	Type of Context	Stratigraphic Relationship	Pottery	Building Material	Glass	Animal Bone	Coin	Iron	Copper	Other Small Finds	Comments	Phase/Date
F1522		Pit	Cuts F1518	X	T								11th C.
"	L1	F111	Cut by F1014,				X		X		S		
"	L2	"	F1030B, F1515?				X						
"	L3	"	F1519.		D?		X		X				
"	L4	"	Overlain by F1502.				X						
F1523		Pit	= F1518				X					Not on phase plan	11th C.
"	L1	F111											
"	L2	"											
"	L3	"											
F1524		Pit	= F2521	X	T							Lack of site records	13th C.
"	L1	F111					X						
F1525		Pit	Cuts F1540, F1541, X	X	T							Relation to F1541, F1547, F1549 based on pot evidence	14th C.
"	L1	F111	F1546, F1547,				X					Relation to F1548 unknown.	
"	L2	"	F1549. Cut by				X						
"	L3	"	F1528(pm).		D				X				
F1526		Pit	Cut by F1528(pm), X	X	T							Much contamination.	12th C.
"	L1	F111	F1529(pm).		(D)		X					Possibly cut by F1063.	
"	L2	"					X					Relation to F1530 uncertain.	
"	L3	"			(D)		X						
"	L4	"					X						
F1527		Pit	Cuts F1501, F1503.		T							Confused during excavation with F1051.	12th C.
"	L1	F111	Cut by F1003,				X		X	X	B, S		
"	L2	"	F1019, F1023(pm),		D		X				B		
"	L3	"	F1516.				X						
"	L4	"			(D)		X						
F1530		Pit	Cuts F1539.	X	T							Relation to F1526 uncertain, some confusion with finds.	12th C.
"	L1	F111	Cut by F1529(pm)				X						
"	L2	"	F1558?				X						
F1531		Pit	Cuts F1537,	X	T		X					Some confusion of finds with F1529.	13th C.
"	L1	F111	F1546? Cut by F1528(pm), F1529(pm), F1552.						X				
F1533		Pit	Cuts F1521, F1534, F1536, F2519, F2521, F2540.	X	T		X					Poor records. Relations to F2540, F2541 uncertain.	14th C.

31-34 Church Street, (Site A)

Feature	Layer	Type of Context	Stratigraphic Relationship	Pottery	Building Material	Glass	Animal Bone	Coin	Iron	Copper	Other Small Finds	Comments	Phase/Date
F1534 "	L1	Pit F111	Cut by F1521, F1533, F1535. Overlain by F1504, F1506.	X	T D		X				S		11th C.
F1535		Pit	Cuts F1534, F1536, F1539, F2536, F2551.	X	T		X					Separate pot horizons, latest date taken.	14th C.
F1536		Pit	Cut by F1533, F1535, F2541.	X	T		X					Uncertain relation to F2540.	13th C.
F1537 " "	L1 L2	Pit F111 "	Cut by F1531, F1552.	X	T		X X X			X		Intrusive 15th C. pottery.	12th C.
F1538		Pit	Cuts F1539, F2551. Cut by F1540. Overlain by F1506, F1508.	X	T, (D)		X		X(3)		B, S(4)		12th C.
F1539 "	L1	Oven	Cuts F2551. Cut by F1539, F1538, F1540.	X	D							See F1504-F1506 etc. hearths. Poor excavation. Some intrusive pot. 'F1539 cuts F1538', site note, book, good pot evidence disputes this.	11th C.
F1540 "	L1	Pit F111	Cuts F1538, F1539, F1541? F2551. Cut by F1525. Overlain by F1506, F1508.	X	T, D	VG	X		X		B S		13th C.
F1541		Pit	Cut by F1525, F1537, F1540? F1548, F2531(pm) Cuts F1547.	X	T, D		X					Confused excavation, pot evidence accepted. Surprising lack of pot.	11th C.
F1542		Pit	Underlies F1543 (pr)									Uncertain date	Not phased.

31-34 Church Street, (Site A)

Feature	Layer	Type of Context	Stratigraphic Relationship	Pottery	Building Material	Glass	Animal Bone	Coin	Iron	Copper	Other Small Finds	Comments	Phase/Date
F1546		Pit	Cut by F1525? F1528(pm), F1531.	X			X						10th C. or earlier
F1547		Pit	Cut by F1541, F1540.	X	T		X					Not fully excavated. Some intrusive 13th- to 15th- cent. pot.	11th C
F1548		Pit?	Cuts F1541, F1547, X F1549. Cut by F2531(pm)	X	T,AS		X			X	S(AS),L	Relation to F1525 unknown. Relation to F1541 based on pot evidence.	11th C.
F1549			Cut by F1525, F1537, F1548, F1553, F1554.	X			X					Much cut about. Little pot, long date range.	Not phased.
F1552		Pit	Cuts F1531, F1537, F1553.	X									15th C.
F1553		Pit	Cuts F1549, F2534. Cut by F1537, F1552, F1554. Overlain by F8, F2009.	X								Formerly numbered F1509, F2509. Confused excavation, mixed pot. Not fully excavated.	11th C.
F1554		Pit	Cuts F1549, F1553, F2534. Cut by F1531(pm) Overlain by F8.	X			X				B	Formerly numbered F1509, F2509. Confused excavation, mixed pot. Not fully excavated.	11th C.
F1555		Pit	Cut by F1556	X								Salvage.	10th C. or earlier
F1556		Pit	Cuts F1555 Overlain by W F50 L10/2	X	T		X		X	Y	R	Salvage	11th C.

31-34 Church Street, (Site A)

Feature	Layer	Type of Context	Stratigraphic Relationship	Pottery	Building Material	Glass	Animal Bone	Coin	Iron	Copper	Other Small Finds	Comments	Phase/Date
F1557		Pit	Cut by F1022, F1030A, F1503, F1515. Overlain by F1037.										11th C.
F1558		Pit?	Cuts F1530 Cut by F43(pm)	X	T							Salvage. Date uncertain.	Not phased
F1559		Pit	Cut by F1529(pm), F1530.									Pit discovered during section drawing. Pot lost to F1529 (pm)? Not bottomed.	12th C.
F1560		Post hole										Associated with F1561. Uncertain date, 14th C. or earlier.	14th C.
F1561		Post hole	Overlain by F1037.									Associated with F1560. Uncertain date, 14th C. or earlier.	14th C.
F2001		Stone scatter	Overlies F2550	X	T							Associated with F8. Mixed pot. Not on phase plan.	
F2002		Stone scatter	Overlies F2527, F2528, F2537. F2550.							X		Associated with F8. Not on phase plan.	
F2006			= F8	X									
F2007	"	Stone packing	Overlain by F2(pm), F3(pm) F2004(pm).	X	T						X(2)	Associated with F8. Not on phase plan.	
F2010	"	Hearth?										Unassociated? Layer within F2501?	Not phased.

31-34 Church Street, (Site A)

Feature	Layer	Type of Context	Stratigraphic Relationship	Pottery	Building Material	Glass	Animal Bone	Coin	Iron	Copper	Other Small Finds	Comments	Phase/Date
	L2013		Overlain by L6					X(2)	X(3)	X(10)	S	English unofficial sterling jetton and a 14th-C. jetton.	Not phased.
	L2030												
	L2035												
	L2037				T						S		
	L2038		Overlain by F2511, F2513.								R		Not phased.
	L2041								X(2)				Undated.
F2501		Pit	Cuts F2503, F2521.	X	T, D							F2501 cut by F2503 site plans, but good pot evidence indicates reverse is true.	13th C.
"	L1	F111						X			B, L		
"	L2	"	Cut by F13(pm), F2518.										
F2502		Pit	Cuts F2517? F2518. Cut by F13(pm).	X	T		X			X		Uncertain relation to F2518.	14th C.
"	L1	F111				VG	X			X	B		
"	L2	"											
"	L3	"									B	Confused excavation.	
"	L4	"										Separate pot horizons,	
"	L5	"					X					latest date taken.	
"	L6	"											
"	L7	"											
"	L8	"					X						
"	L9	"											
F2503		Pit	Cuts F1028	X	T							Cut by F1513, 12th C.	
"	L1	F111	Cut by F13(pm)		D	VG	X		X		S, L	based on pot evidence. F2503	
"	L2	"	F1513, F2501,		D		X				B	cuts F2501, site plans, but good	
"	L3	"	F2515, F2518.				X					pot evidence indicates reverse.	

31-34 Church Street, (Site A)

Feature	Layer	Type of Context	Stratigraphic Relationship	Pottery	Building Material	Glass	Animal Bone	Coin	Iron	Copper	Other Small Finds	Comments	Phase/Date
F2505		Pit	Cuts F2549	X			X				R	Relation to F2507 based on good pot evidence.	12th C.
"	L1	F111	Cut by F2507, F2518.										
"	L2	"											
"	L3	"								X			
"	L4	"											
"	L5	"											
F2506		Pit	Cuts F2552	X	T		X					Layers variously assigned to F2510, F2541. F2506 L1 'belongs to F2541'.	13th C.
"	L1	F111	Cut by F2541										
"	L2	"	Overlain by F2510.										
"	L3	"											
"	L4	"											
"	L5	"											
"	L6	"											
"	L7	"											
"	L8	"											
"	L9	"											
"	L10	"											
"	L11	"							X				
"	L12	"											
F2507		Pit	Cuts F2505	X			X					In the early stages of excavation confused with F2501.	13th C.
"	L1	F111	Cut by F2501, F2502, F2518.				X						
"	L2	"					X						
F2508		Pit?		X								Unlocated. L2035 possibly associated. Not on phase plan.	14th C.
F2509		Pit(s)		X			X					Renumbered F1509. Confused excavation. Coin, suggested deposition c. 1138-50. Pot could be 12th C.	13th C.
"	L1	F111											
"	L2	"											
"	L3	"											
"	L4	"											
"	L5	"											
"	L6	"						X					
F2510		Floor	Cuts F2506, F2517, F2522, F2541, F2552.	X	T								14th C.
"	L1	Gravel floor					X			X(2)			
"	L2	Ash											
"	L3	Surface				VG			X				
"	L4	Dark earth											

31-34 Church Street (Site A)

Feature	Layer	Type of Context	Stratigraphic Relationship	Pottery	Building Material	Glass	Animal Bone	Coin	Iron	Copper	Other Small Finds	Comments	Phase/Date
F2511		Oven?	Overlies F2514 Cut by F2524	X	T								12th C.
"	L1												
"	L2									X			
"	L3												
"	L4						X						
F2512		Pit		X								Poorly recorded, mixed pot.	Not phased
"	L1						X			X			
F2513		Oven	Cuts F2511 Overlies F2526 Cut by F3(pm), F6(pm), F2555?	X	T, (D)							No relation to F2548. 'F2513 cuts F2526' site notebook.	14th C.
"	L1						X				R		
"	L2												
"	L3												
"	L4						X				L		
"	L5						X						
"	L6						X						
"	L7						X						
F2514		Pit	Overlain by F2511										12th C.
F2515		Pit	Cuts F1028, F2503 Cut by F1516, F2513.	X	T								12th C.
"	L1	F111					X		X				
"	L2	"			D				X(4)				
"	L3	"					X						
F2516		Pit	Cuts F2549, F2553. Cut by F2529.	X	T								13th C.
"	L1	F111			(D)		X						
"	L2	"					X		X				
"	L3	"					X						
F2517		Pit	Cuts F2519 Cut by F1015, F2502? F2522, F2554.	X	T								12th C.
"	L1	F111			(D)		X		X(2)	X	L	Intrusive pot. Confused finds with F2502, F2554. Poor excavation, mixed pottery.	
"	L2	"			(D)		X						
F2518		Pit	Cuts F2501, F2503, F2505, F2507, F2515, F2549. Cut by F13(pm) F2502.	X	T							Cut by F2502 based on pot evidence.	13th C.
"	L1	F111			(D)		X			X	B		
"	L2	"			(D)		X						
F2519		Pit	Cut by F1533, F2517, F2521.	X									12th C.
"	L1	F111					X				S		
F2520		Pit	Cuts F2538, F2550. Cut by F2531(pm).	X	T								12th C.
"	L1	F111			D		X				B, S, R(2)		
"	L2	"					X						

31-34 Church Street, (Site A)

Feature	Layer	Type of Context	Stratigraphic Relationship	Pottery	Building Material	Glass	Animal Bone	Coin	Iron	Copper	Other Small Finds	Comments	Phase/Date
F2521		Pit	= F1524	X	T							Not fully excavated.	13th C.
"	L1	Fill	Cuts F1521, F2519.		WP		X		X	X			
"	L2	"	Cut by F1030A,				X						
"	L3	"	F1013, F1015, F1513, F1533, F2501, F2540.		WP, (D)		X						
F2522		Pit	Cuts F2517, F2541.	X	T		X		X(4)			'F2522 cuts F2554', pot evidence suggests reverse is true.	13th C.
"	L1		Cut by F2554 Overlain by F2510.						X				
F2524		Construction trench for F8.	Cuts F2511.									Not on phase plan.	
F2525		Pit?	Cuts F2511					X(2)				Poor records. Not Coins, 14th-C. Phased. Jettons.	
"	L1												
F2526		Pit?		X			X					Poor records	13th C.
"	L1												
F2527		Pitching	Overlain by F2002									Abuts F8	15th C.
F2528		Pitched stones	Overlain by F2002									Associated with F8?	15th C.
F2529		Pit	Cuts F2516, F2553 Cut by F17(PH)	X	T		X				B	Uncertain relation to F1514. Separate pot horizons, latest date taken.	14th C.
F2530		Construction trench for F8.		X			X					Residual pottery?	
F2532		Pit	Cut by F4(PH)	X	T		X		X		L	Uncertain relation to F2534. III recorded. Cut by F2535? Cut by F2543 on pot evidence.	15th C.
"	L1												
"	L2												

31-34 Church Street (Site A)

Feature	Layer	Type of Context	Stratigraphic Relationship	Pottery	Building Material	Glass	Animal Bone	Coin	Iron	Copper	Other Small Finds	Comments	Phase/Date
F2533 "	L1	Pit?	Cut by F2535 Overlain by F8	X	T,(D)		X				L	Lack of recording. Not fully excavated.	11th C.
F2534		Pitched cobbling.	Cuts F2550 Cut by F1553, F1554, F2532. Overlain by F8.	X		VG	X						11th C.
F2535 "	L1	Pit	Cuts F2533 Cut by F4(PM)	X	T		X					Cuts F2532?	13th C.
F2536		Pit	Cuts F2537, F2538, F2551, F2552. Cut by F1535, F2541.	X								On insecure pot evidence F2536 is cut by F1536.	12th C.
F2537		Pit	Cuts F2538, F2550, F2552. Cut by F2536 Overlain by F2002.	X			X			X		Highly confused excavation.	11th C.
F2538		Pit	Cut by F2520, F2536, F2537, F2550.	X			X					Relation to F2551 uncertain, ill recorded.	11th C.
F2539		Pit		X								Poorly recorded.	13th C.
F2540		Pit	Cuts F2521, F2541. Cut by F1533.	X		VG	X					Relations based on pot evidence. Uncertain relation to F1536.	13th C.
F2541 "	L1	Pit	Cuts F1536, F2506, F2536, F2552. Cut by F2522, F2540, F2552. Overlain by F2510.	X	T,(D)	VG	X			X(2)		Based on pot evidence cut by F1533.	13th C.

31-34 Church Street (Site A)

Feature	Layer	Type of Context	Stratigraphic Relationship	Pottery	Building Material	Glass	Animal Bone	Coin	Iron	Copper	Other Small Finds	Comments	Phase/Date
F2542		Pit	= F2550?	X	D							Poor excavation. Some finds from F2537 may belong here.	10th C. or earlier.
"	L1						X						
F2543		Pit		X	T		X					Poorly recorded. Cuts F2532 on pot evidence.	13th C.
F2544		Pit					X					Poorly recorded	Not Phased
F2545-F2547												Context numbers not used?	
F2548		Wall	Cut by F3(PM), F6(PM).					X				Also appears on PM phase plans. A SF2143, 14th-cent. jetton, found below/adj to F2548?	
F2549		Pit	Cut by F2505, F2516, F2518?										12th C.
F2550		Pit	= F2542? Cuts F2538 Cut by F2520, F2534, F2537. Overlain by F8, F2001, F2002.									Confused excavation. May equal F2542. Some finds from F2537 may belong here.	Not phased.
F2551		Pit	Cut by F1535, F1538, F1539, F1540, F2536. Overlain by F2551.									Poor records. Relation to F2538 uncertain.	11th C.
F2552		Pit	Cut by F2506, F2536, F2537, F2541.									'much cut about' site notebook.	11th C.

31-34 Church Street (Site A)

Feature	Level	Type of Context	Stratigraphic Relationship	Pottery	Building Material	Glass	Animal Bone	Coin	Iron	Copper	Other Small Finds	Comments	Phase/Date
F2553		Pit	Cut by F1516, F2516.									Poor excavation. Some finds from F1516 may belong here.	Not phased.
F2554	"	Pit L2016	Cuts F2517, F2522, F2541.	X	T						X S	'Cut by F2522', pot evidence indicates reverse is true.	15th C.
F2555		Hearth	Cuts F2513? Overlain by F5(PM), F6(PM).									Also appears on PM plans.	15th C.

A Concordance of Finds with a Description of Features and Layers

Table 5 , Greyfriars (Site B)

Feature	Layer	Type of Context	Stratigraphic Relationship	Pottery	Building Material	Glass	Animal Bone	Coin	Iron	Copper	Other Small Finds	Comments	Phase/ Date
I F1		Wall	Cut by F20 = II, III, VII F1	X								Town wall, north wall of choir. 2 Sherds, 11th/12th- cent.	Ph. I
I F2		Culvert through F1.	= VII F2										
I F2/1					(M)								
I F2/2					T								
I F2/3													
I F2/4				X	T							2 Sherds, 13/14th-cent. Probably residual.	
I F2/5													
I F2/6				X								2 Sherds, 13th-cent? Probably residual.	
I F2/7													
I F2/8													
I F6		Not defined	Overlain by F4/2, F5.	X	T							7 Sherds, mid 13th-14th-cent. Probably residual.	
I F7		Ashlar blocks.	In F1										
I F9		Wall	From F1, abuts F20.		(M)							First north nave	Ph. II
I F10		Blocking wall	Between F9, F11.		(M)							Blocks the walking place.	Post-med

Greyfriars (Site B)

Feature	Layer	Type of Context	Stratigraphic Relationship	Pottery	Building Material	Glass	Animal Bone	Coin	Iron	Copper	Other Small Finds	Comments	Phase/ Date
I F11		Walling											
I F11/1		"	Imposed on F11/2.		(M)								Ph. IV
I F11/2		Walling		X	(M)							1 Sherd, 13th-14th-cent. Probably residual.	Ph. IV
I F11/3		"	Imposed on F11/2.										Ph. IV
I F12		Blocking wall										On post-medieval concordance	Ph. VIII
	I F12 L3				WP								
I F13		Wall			(M),T							Plaster and floor (F15) preserved on N. side.	Ph. IV
I F14		Pillars, A-C			AS								
I F15		Floor layers			(M)							Tiles <u>in situ</u>	
I F17		Blocking wall			AS							See also X F4, Ph. VIII F6 Blocked off north nave.	
I F18/3		Not defined										F25 skeleton in F18/3. Not planned. No report.	
I F20		Wall	- II F20		(M),T							First north nave.	Ph. II

Greyfriars (Site B)

Feature	Layer	Type of Context	Stratigraphic Relationship	Pottery	Building Material	Glass	Animal Bone	Coin	Iron	Copper	Other Small Finds	Comments	Phase/Date
I F22		Not defined	Cut by F9, F11/2, F20										Pre-Prifory?
	F22/1												
	F22/2												
	F22/3											F24 Skeleton in F22/3.	
I F23		Filling. Not defined.	Enclosed by F1, F9, F20.	X								1 Sherd, 13th to 14th-cent.	
I F24		Burial	In F22/3									head against Fl. Missing. No report.	
I F25		Burial	In F18/3									Unplanned. Outside church, n. of Walking Place. See HB Report.	
I F26		Wall	= IX F9		(M)							East wall of second north nave.	Ph. IV
I F28		Burial										In choir. Complete. See HB Report. Excavated within an area not fully defined or excavated.	
I F30		Buttress										Against south wall of choir. Location? Doesn't fit with Tr. XXXIII.	
II	II L2		Cut by burials	X						X		15 Sherds, 13th-cent?	
	II L3	Destruction layer.		X								1 Sherd, mid 13th-cent.	

Grayfriars (Site B)

Feature	Layer	Type of Context	Stratigraphic Relationship	Pottery	Building Material	Glass	Animal Bone	Coin	Iron	Copper	Other Small Finds	Comments	Phase/Date
	II L4	Pit?	Cut by F20.	X								15 Sherds, 11th/E 12th-cent. 1 17th-cent. sherd. Not well excavated.	
	II L6	Destruction layer.	Cut by F34, F35.		AS								
	II L8	Destruction layer.			MP(c.100)								
	II L10	Destruction layer.	Overlain by F28	X								6 Sherds, 13th-cent.	
	II L13	Destruction layer?	Overlain by L12 Cut by F27	X								3 Sherds, 13th-cent.	
	II L15	Destruction layer?	Overlain by L14 Overlies F30 Cut by F27.	X								2 Sherds, E 13th-cent.	
II F1		Wall	= I, III, VII F1.									City wall, north of choir.	Ph. I
II F3		Burial	Cut by F6(PM) F7(PM).									Lower half only. Outside church, n. of Choir. See HB Report.	
II F4		Burial										Almost complete. Outside church, n. of Choir. See HB Report.	
II F5		Burial		X								Upper half only. Outside church, n. of Choir. See HB Report. 8 Sherds, E-M 13th-cent.	

Greyfriars (Site B)

Feature	Layer	Type of Context	Stratigraphic Relationship	Pottery	Building Material	Glass	Animal Bone	Coin	Iron	Copper	Other Small Finds	Comments	Phase/Date
II F8		Burial		X						X		Almost complete. Outside church, n. of Choir. See HB Report. 5 Sherds, 12th-cent.	
II F9		Burial	Overlies F1'	X	T							Almost complete. Outside church, n. of Choir. See HB Report. 6 Sherds, E-M 13th-cent.	
II F10		Burial			WP(5)							Almost complete. Outside church, n. of Choir. See HB Report.	
II F11		Burial	Overlain by F9	X					X			Almost complete. Outside church, n. of Choir. See HB Report. 7 Sherds, mid 13th-cent.	
II F12		Burial		X	T							Upper half only. Outside church, n. of Choir. See HB Report. 2 Sherds, E 13th-cent.	
II F13		Burial	Cut by F32	X	T							Disturbed burial. Outside church, n. of Choir. See HB Report. 2 Sherds, 13th/14th-cent.	
II F14		Burial	Cuts F16 Overlain by F19		WP							Skull missing. Outside church, n. of Choir. See HB Report.	
II F15		Burial		X								Almost complete. Outside church, n. of Choir. See HB Report. 2 Sherds, 13th-cent.	

Greyfriars (Site B)

Feature	Layer	Type of Context	Stratigraphic Relationship	Pottery	Building Material	Glass	Animal Bone	Coin	Iron	Copper	Other Small Finds	Comments	Phase/ Date
II F16		Burial	Cut by F14									Largely incomplete. Outside church, n. of Choir. See HB Report.	
II F17		Burial										Planned, not lifted. Skull only. No report. Outside church, n. of Choir.	
II F18		Robber trench of F20	Overlain by F21 Cut by F32	X	WP(9) AS							7 Sherds, 12th-cent.	
II F19		Disturbed bones.	Overlies F14 Cut by F32.									Unplanned. No report. Miscellaneous bones perhaps belonging to F13, F16.	
II F20		Wall	= I F20									First north nave.	Ph. II
II F21		Burial	Overlies F18	X								Almost complete. Outside church, N. of Choir. See HB Report. 3 Sherds, 13th-cent.	
II F22		Burial	Overlies F25	X	WP,T							Almost complete. Outside church, N. of Choir. See HB Report. 3 Sherds, 12th-cent.	
II F23		Burial										Planned, not lifted. Skull only. No report.	
II F24		Disturbed burial										Skull and a few bones. Outside church, N. of Choir. See HB Report.	

Greyfriars (Site B)

Feature	Layer	Type of Context	Stratigraphic Relationship	Pottery	Building Material	Glass	Animal Bone	Coin	Iron	Copper	Other Small Finds	Comments	Phase/Date
II F25		Burial	Overlain by F22	X								Lower half only. Outside church, N. of Choir. See HB Report. 5 Sherds, 13th-cent.	
II F26		Burial	Overlies F31									Complete. Outside church, N. of Choir. See HB Report.	
II F27		Burial		X						X		Lower half only. Outside church, N. of Choir. See HB Report. 2 Sherds, 13th-cent.	
II F28		Mortar surface	Overlies L10										
II F29		Mortar floor	= F30? Cut by F34, F35.									Cut by burials. Associated with first north nave.	
II F30		Mortar floor	= F29? Overlain by L15									Associated with first north nave.	
II F31A F31B		Disturbed burials	Overlain by F26	X						X		One complete burial, one incomplete. Outside church, N. of Choir. See HB Report. 1 Sherd, 13th/14th-cent.	
II F32		Not defined	Cuts F13, F18, F19.				HP						
II F33		Layer in F31.										Above skeleton.	
II F34		Burial	Cuts L6, F29, F41.									No report. Outside church, N. of Choir.	
II F35		Not defined.	Cuts L6, F29.										

Greyfriars (Site B)

Feature	Layer	Type of Context	Stratigraphic Relationship	Pottery	Building Material	Glass	Animal Bone	Coin	Iron	Copper	Other Small Finds	Comments	Phase/Date
II F36		Burial?										Unexcavated.	
II F37		Mortar (floor?)										Limited excavation.	
II F38		Mortar (floor?)										Limited excavation.	
II F39		Mortar (floor?)										Limited excavation.	
II F40		Not defined											
II F41		Wall?	Cut by F34									Limited excavation.	
III													
III F1		Wall	= I, II, VII F1	X								Townwall, north wall of choir. 2 Sherds, 12th-cent.	Ph. I
IV													
IV L3				X		WG						Some finds sent in with F7/1. 2 Sherds, 12th-cent.	
IV L6			Overlain by F26				T						
IV L15			Overlain by F60	X								PM finds. Confused excavation. 4 Sherds, 12th/E13th-cent.	
IV L18						WG							
IV L20		General clearance					T					Unstratified.	

Greyfriars (Site B.

Feature	Layer	Type of Context	Stratigraphic Relationship	Pottery	Building Material	Glass	Animal Bone	Coin	Iron	Copper	Other Small Finds	Comments	Phase/ Date
	IV L21	Demolition layer?	Overlies L24	X	T	WG						Post-medieval? = L2, L4, L5, L17, L25? 3 Sherds, 13th/14th-cent.	
	IV L22	Demolition layer?	Similar to L21. Overlies L23.		T							Post-medieval? = L2, L4, L5, L17, L25?	
	IV L23		Overlain by L22								B	B IV SF48 probably dropped out of section.	
	IV L24		Overlain by L21		T	VG				X			
IV													
IV F10		Wall	= X F8									Rebuilt north wall of aisle.	Ph. 7
IV F11		Burial										In Nave. See HB Report. Disturbed skull adjacent.	
IV F15		North edge of F76										Grave? Unexcavated.	
IV F16		Disturbed burial.										Unplanned. In Nave. See HB Report.	
IV F19		Disturbed burials.	Lying in L5.									No report.	
IV F24		Part of F76, pit.		X								9 Sherds, E 13th cent.	
IV F25		Mortar surface with tile impressions?	Overlies F88.										
IV F26		Mortar (floor?)	Overlies L6 Against F10		(M)								

Greyfriars (Site B)

Feature	Layer	Type of Context	Stratigraphic Relationship	Pottery	Building Material	Glass	Animal Bone	Coin	Iron	Copper	Other Small Finds	Comments	Phase/Date
IV F27		Not defined.	= F26?										
IV F32		Wall			(M)							South wall of nave.	
IV F33		Foundation trench of F32.	Adjacent F60	X	WP							19 Sherds, E-M 13th-cent.	
IV F35		Burial	Overlain by L15 Cut by F36.	X								Not fully lifted. In Nave. See HB Report. 13 Sherds, E-M 13th-cent.	
IV F36		Burial	Overlies F66. Cuts F35. Cut by F64.									Recorded as cutting F17, PM pit. Almost complete. In Nave. See HB Report.	
IV F41		Burial							X			Padlock with shackle. Legbone through shackle. Incomplete. Outside church, N. of Nave. See HB Report.	
IV F45		Pit		X								2 Sherds, 13th/14th-cent.	
IV F50		Burials		X	WP							No report. 7 Sherds, 13th-cent? + 1 PM.	
IV F51		Burial										Upper half only. With F52, F53. Outside church, N. of Nave. See HB Report.	
IV F52		Burial										Upper half only. With F51, F53. Outside church, N. of Nave. See HB Report.	

Greyfriars (Site 8)

Feature	Layer	Type of Context	Stratigraphic Relationship	Pottery	Building Material	Glass	Animal Bone	Coin	Iron	Copper	Other Small Finds	Comments	Phase/Date
IV F53		Burial										Upper half only. With F51, F52. Outside church, N. of Nave. See HB Report.	
IV F54		Burial										Skull only. Outside church, N. of Nave. See HB Report.	
IV F55		Burial		X								Upper portion only. With F56, F57. Outside church, N. of Nave. See HB Report. 1 Sherd, 13th/14th-cent.	
IV F56		Burial		X	T							Upper half only. With F55, F57. Outside church, N. of Nave. See HB Report. 1 Sherd, 11th/12th-cent.	
IV F57		Burial										Skull only. With F55, F56. Outside church, N. of Nave. See HB Report.	
IV F58		Burial		X								Complete. Outside church, N. of Nave. See HB Report. 1 undated sherd.	
IV F60		Mortar floor	Adjacent F32 Overlies L15.		WP								
IV F61		Not defined.	Overlies F66	X								32 Sherds, L12th/ E 13th-cent.	Pre - Priority

Greyfriars (Site D)

Feature	Layer	Type of Context	Stratigraphic Relationship	Pottery	Building Material	Glass	Animal Bone	Coin	Iron	Copper	Other Small Finds	Comments	Phase/Date
IV F62		Hearth/ bell pit?	Overlies F74 Cut by F69.									Poorly excavated.	
F62/1		"											
F62/2		"		X								2 Sherds, 12th-cent?	
F62/3		"		X								66 Sherds, E 13th cent.	
F62/4		"		X	T							19 Sherds, E 13th-cent.	
IV F63		Burial	Cuts F68 Cut by F65	X								Legs only. In Nave. See HB Report. Undated sherds.	
IV F64		Burial	Cuts F34									Unplanned. Lifted? No report. In Nave.	
IV F65		Pit	Cuts F63	X								2 Sherds, 12th-cent.	
IV F65a		Not defined										Very similar to F65.	
IV F66		Pit	Overlain by F36, F61.	X							B	20 Sherds, 11th/12th-cent.	Pre-Priory.
IV F67		Burial		X								Female. Legs only. In Nave. See HB Report. 2 Sherds, 12th-cent.	
IV F68		Not defined	Cut by F63	X								Similar to F61. 9 Sherds, 12th/E13th-cent.	

Greyfriars (Site B)

Feature	Layer	Type of Context	Stratigraphic Relationship	Pottery	Building Material	Glass	Animal Bone	Coin	Iron	Copper	Other Small Finds	Comments	Phase/Date
IV F69		Burial	Cuts F62	x								Minus lower legs. In Nave. See HB Report. 1 Sherd, 12th cent.	
IV F70		Disturbed burial		X								No report. In Aisle. 2 Shards, 13th/14th cent.	
IV F73		Burial										Complete. Outside church, N. of Nave. See HB Report.	
IV F74		Post hole	Overlain by F62										
IV F75		Pit	Overlain by F19 (PH).	X								1 Sherd, 13th/14th cent.	
IV F76		Pit		X								F15, F24, F84 part of this this feature. 16 Sherds, 1 11th cent. and later.	
IV F77		Pit	Included with F78.	X								3 Sherds, 13th cent.	
IV F78		Burials	Includes F77.									In Nave. See HB Report.	
IV F79			= F83										
IV F80		Burial										No report. In Nave.	
IV F81		Burial										In Nave. See HB Report.	
IV F82		Post hole											
IV F83		Not defined.		X		WG						1 Sherd, 13th cent.	

Greyfriars (Site B)

Feature	Layer	Type of Context	Stratigraphic Relationship	Pottery	Building Material	Glass	Animal Bone	Coin	Iron	Copper	Other Small Finds	Comments	Phase/Date
IV F84		Burial		X								Partly disturbed. In Nave. See HB Report. 2 Shards, 12th-cent.	
IV F85		Floor make up.	Overlies F86, F87.										
IV F86		Pit	Overlain by F85.										
IV F87		Not defined.	Overlain by F85.	X								6 Shards, L 12th/E 13th-cent.	Pre-priory
IV F88		Wall	Overlain by F25. = X F5?										
IV F90		Buttress	= X F8										
IV F91		Burial										Upper portion only. Outside church, N. of Nave. See HB Report.	
IV F92		Burial										Upper portion only. Outside church, N. of Nave. See HB Report.	
IV F93		Burial										Skull only. No report. Outside church, N. of Nave.	
IV F94		Burial										Incomplete. Not lifted. No report. Outside church, N. of Nave.	
IV F95		Burial										Skull only. Outside church, N. of Nave. See HB Report.	

Feature Numbers F98-F99, F103-F109 not used.

Greyfriars (Site B)

Feature	Layer	Type of Context	Stratigraphic Relationship	Pottery	Building Material	Glass	Animal Bone	Coin	Iron	Copper	Other Small Finds	Comments	Phase/Date
Trench	V												
	V L15		Overlain by L13, L14 Cut by F30.	X								9 Sherds, 14th-15th-cent.	
	V F15	Mortar	Overlies L10	X	T							3 Sherds, 15th/16th-cent.	
	V F22	Brown soil	Overlies F23	X	T							2 Sherds, 12th-cent. Not shown on plan.	
	V F30	Pit	Cuts L15	X								10 Sherds, 14th-cent.	
	V F31	Mortar floor	= VI F32 Cut by F16 (PM)										
Trench	VI												
	VI L1	General clearance										Nearly all Med. finds. On PM concordance.	
	VI L2	General clearance	= L1									Nearly all Med. finds. On PM concordance.	
	VI L3		Overlain by F5 (PM). Overlies F8.	X								Similar to L1, L2. 5 Sherds, 13th/14th-cent.	
	VI L4		Cut by F16(PM).										
	VI L11		Overlies F19									Confused excavation. Fill of F16(PM), F18(PM) and general soil layer. Mixed finds including Med.	
	VI L14			X								9 Sherds, 15th/16th-cent.	

Greyfriars (Site B)

Feature	Layer	Type of Context	Stratigraphic relationship	Pottery	Building Material	Glass	Animal Bone	Coin	Iron	Copper	Other Small Finds	Comments	Phase/Date
	VI L15	General clearance under F1, F25.											
VI F6		Pit(s)		X								2 Sherds, 13th/14th-cent.	
VI F7		Pit		X								4 Sherds, 15th/16th-cent.	
VI F8		Robbed wall	= X F14	X	(M)							4 Sherds, 15th/16th-cent. VI F2, robber trench of F8.	Ph. III
VI F10		Pit		X	T					B		119 Sherds, 11th-plus 14th-cent.	
VI F14		Pit		X	T							5 Sherds, 13th-cent.	
VI F16		Buttress	= X F50									Western extension to nave and north aisle.	Ph. III
VI F24		Pit?		X	T							7 Sherds, 13th-cent.	
VI F31		Buttress	= X F19		(M)							Western extension to nave and north aisle.	Ph. III
VI F32		Mortar floor	= V F31										
VII													
VII F1		Wall	= I, II, III F1									City wall, north wall of choir.	Ph. I
VII F2		Culvert	= I F2		(M)								
VII F6		Foundation trench of F1.	Cuts F7 Cut by F4(PM).	X						X		9 Sherds, M 13th cent.	

Greyfriars (Site B)

Feature	Layer	Type of Context	Stratigraphic Relationship	Pottery	Building Material	Glass	Animal Bone	Coin	Iron	Copper	Other Small Finds	Comments	Phase/Date
VII F7		Not defined.											
F7/1		"											
F7/2		"	Cuts F9	X								3 Sherds, 12th cent.	
F7/3		Not defined	Cuts F9	X								1 Sherd, 12th cent?	
F7/4		"	= F9/2										
VII F8		N/S Trench?				WG							
VII F9		Trench?	Cut by F7/2, F7/3, F4(PH).										
F9/1		"											
F9/2		"											
F9/3		"		X								4 Sherds, E-M 13th cent.	
VIII													
VIII F2		Pit		X								24 Sherds, E-M 13th	
VIII F5		Pit		X								1 Sherd, 12th cent.	
IX F1		Wall			T				X			Wall of chapel of rebuilt north nave.	Ph. IV
IX F4		Wall			T							Wall of chapel of rebuilt north nave.	Ph. IV
IX F9		Wall	= I F26	X								East wall of second north nave. 3 Sherds. L12th-E13th	Ph. IV

Greyfriars (Site 8)

Feature	Layer	Type of Context	Stratigraphic Relationship	Pottery	Building Material	Glass	Animal Bone	Coin	Iron	Copper	Other Small Finds	Comments	Phase/Date
IX F10		Floor tiles <u>in situ</u>			(M),T							Stolen.	
IX F14		Timber slot (?)			T							Feature no. assigned during post excavation work.	
X F1		Wall			(M),AS							West wall of second north nave.	Ph. IV
X F2		Wall	Cuts F46		(M),AS							North wall of aisle.	Ph. II
X F5		Pier base	= IV F88? Overlain by F54.		(M)								Ph. II
X F8		Wall and buttress	= IV F10 = IV F90		(M)							Rebuilt north wall of aisle.	Ph. V
X F9		Wall			(M)							Small structure built outside the aisle.	Ph. VII
X F10		Buttress			(M),AS							Rebuilt north wall of aisle.	Ph. V
X F11		Wall and buttress	Overlies F49, F52.		(M)							Western extension of nave and north aisle.	Ph. III
X F14		Buttress	= VI F8		(M)							Western extension of nave and north aisle.	Ph. III
X F15		Footings of pier base.										Original build of nave and north aisle.	Ph. II
X F16		Buttress			(M), AS							Original north wall of aisle.	Ph. II
X F17		Wall			(M),AS							Original west wall of nave.	Ph. II

Greyfriars (Site B)

Feature	Layer	Type of Context	Stratigraphic Relationship	Pottery	Building Material	Glass	Animal Bone	Coin	Iron	Copper	Other Small Finds	Comments	Phase/Date
X F18		Buttress	Foundation trench cuts F31.		(M)							Western extension of nave and north aisle.	Ph. III
X F19		Buttress	= VI F31		(M)							Western extension of nave and north aisle.	Ph. III
X F20		Wall			(M)							Western extension of nave and north aisle.	Ph. III
X F21		Floor in north aisle.			T	WG(6)							
X F30		Burial	Overlain by F53									Almost complete. In Aisle. See HB Report.	
X F31		Burial	Cut by foundation trench of F18.									Complete. In Nave. See HB Report.	
X F32		Burial										Skull only lifted. No report. In Nave.	
X F33		Burial	Cut by F35(PM) Overlies F37.			YG						Upper half only. In Nave. Glass ring. See HB and Glass Reports.	
X F37		Well?	Overlain by F33	X								1 Sherd. 13th-14th	
X F38		Mortar floor										Preserved adjacent to F11.	
X F40		Floor?	Overlies F41 Cut by F39(PM).									In Western extension to nave and north aisle.	
X F41		Floor	Overlain by F40 Cut by F39(PM), F43, F44.									In Western extension to nave and north aisle.	

Greyfriars (Site 8)

Feature	Layer	Type of Context	Stratigraphic Relationship	Pottery	Building Material	Glass	Animal Bone	Coin	Iron	Copper	Other Small Finds	Comments	Phase/Date
X F42		Burial	Cut by F25(PM).									Not lifted. No report.	
X F43		Burial	Cuts F41. Cut by F35(PM). Contiguous F44.									Upper half only. With F44. In Nave. See HB Report.	
X F44		Burial	Cuts F41 Cut by F35(PM). Contiguous F43.									Upper half only. With F43. In Nave. See HB Report.	
X F46		Pit	Cut by F2, F4 (PM).	X								14 Sherds. Pre-12th/13th-century.	
X F48		Buttress			(M)							Western extension to nave and north aisle.	Ph. III
X F49		Buttress	Overlain by F11		(M)							Original west wall of north aisle.	Ph. II
X F50		Robbed buttress	= VI F16		(M)							Western extension to nave and north aisle.	Ph. III
X F52		Wall. Not fully defined.	Below F27. Overlain by F11.										
X F53		Burial	Overlies F30									Almost complete. In Aisle. See HB Report.	
X F54		Wall	Overlies F5									Medieval?	
X F55		Burial										Found in Sewer Trench 1968. No exact position. In Nave? See HB Report.	
X F56		Burial										Found in Sewer Trench 1968. No exact position. In Nave? See HB Report.	

Greyfriars (Site B)

Feature	Layer	Type of Context	Stratigraphic Relationship	Pottery	Building Material	Glass	Animal Bone	Coin	Iron	Copper	Other Small Finds	Comments	Phase/Date
F57		Burial in stone coffin.										Coffin destroyed during sewer working. In Nave. See HB & worked stone Reports	
F58		Well	Overlain by F57 or F59.	X								13 Sherds, 12th-cent. +	
Trench	XI	City wall trench, west of Greyfriars Church										Trench XI, problems with pottery and stratigraphy.	
	XI L1			X								6 Sherds. 12th-cent?	
	XI L2			X								11 Sherds. 12th-cent.	
	XI L3			X								4 Sherds. 12th-cent.	
XI F1				X								114 Sherds. Late 12/Early 13th-century.	
XI F2				X								43 Sherds. Mid 12th-century.	
XI F3				X								12 Sherds. Mid to late 11th-cent.	
XI F4		Pit		X								3 Sherds. 13th- to 14th-cent.	
Trench	XII	1 and 2 (a and b)											
	XII 1	Construc-(a) L5 trench.											
XII 1(a) F1		City wall											
XII 1(a) F4		Foundation stones										East wall of choir.	

Greyfriars (Site 8)

Feature	Layer	Type of Context	Stratigraphic Relationship	Pottery	Building Material	Glass	Animal Bone	Coin	Iron	Copper	Other Small Finds	Comments	Phase/Date
XII 2(b) F5	F5	Foundation trench	Cuts F8	X		MG						East wall of choir. 10 Sherds, E-M 13th-cent. 3 Sherds (F5 L1) 12th-cent.	
XII 2(b) F8	F8	Pit	Cut by F5	X								16 Sherds, E-M 13th-cent.	Pre-priory.
XII 2(b) F10	F10	Buttress	Cuts F11									East wall of choir.	
XII 2(b) F11	F11	Pit	Cut by F10. Overlies F14.										Pre-priory
XII 2(b) F12	F12	Pit	Cut by F13	X								12 Sherds, 12th-cent.	
XII 2(b) F13	F13	Wall	Cuts F12	X								Medieval? 1 Sherd, 12th-cent.	
XII 2(b) F14	F14	Pit	Overlain by F11	X								1 Sherd, 13th/14th-cent. Intrusive	Pre-priory.
XII 2(b) F15	F15	Packing for F10											
XIII													
Chapel 2	XIII L2	Floor 1											
Chapel 2	XIII L4	Floor 2 with tile impressions.				T						Some floor tiles <u>in situ</u> .	
Chapel 2	XIII L5	Underlay to Floor 2				X						4 Sherds, 12th-cent.	
Chapel 2	XIII L7	Floor 3 Chapel 2				T						Contemporary with Chapel 1, L15; Chapel 3, L19.	

Greyfriars (Site B)

Feature	Layer	Type of Context	Stratigraphic Relationship	Pottery	Building Material	Glass	Animal Bone	Coin	Iron	Copper	Other Small Finds	Comments	Phase/Date
Chapel 2	XIII L9	Clay layer forming under-flooring for whole of extension to north nave.										Contemporary with Chapel 1, L9; Chapel 3, L21.	
Chapel 2	XIII F1	East wall of north nave.										Extension to second north nave.	Ph.VI
Chapel 2	XIII F2	Wall dividing Chapels 1 & 2										Extension to second north nave.	Ph.VI
Chapel 2	XIII F3	Pier base			AS							Extension to second north nave.	Ph.VI
Chapel 1	XIII L13	Floor with tile impressions											
Chapel 1	XIII L15	Floor.				T						Contemporary with Chapel 2, L7, Floor 3; Chapel 3, L19. Some floor tiles <u>in situ</u> .	
Chapel 1	XIII F4	Altar base.											
Chapel 1	XIII F5	F5 L1 Wall dividing Chapels 2 & 3				T						Extension to Second north nave.	Ph.VI
Chapel 1	XIII F6	Pier base										Extension to second north nave.	Ph.VI
Chapel 1	XIII F9	Well	Overlain by F8 (PM).									2 Sherds, 12th-cent.	

Greyfriars (Site B)

Feature	Layer	Type of Context	Stratigraphic Relationship	Pottery	Building Material	Glass	Animal Bone	Coin	Iron	Copper	Other Small Finds	Comments	Phase/Date
Chapel 3													
	XIII L19	Floor with tile impressions.										Contemporary with Chapel 1, L15. Chapel 2, L7, Floor 3.	
Chapel 3													
	XIII L21											Contemporary with Chapel 1, L9; Chapel 2, L9.	
Trench													
	XIV L4/1			X	T							3 Sherds, L12th/E13th-cent.	
	XIV L8	Plaster floor.	Cut by F7, F9. Overlain by L8/1.		T								
	XIV L8/1	Dark brown loam.	Overlies L8		T								
	XIV L12	Floor	Cut by F11. Overlies L13.	X	WP(4), T	WG						6 Sherds, 13th/14th-cent.	
	XIV L13	Floor	Cut by F11? Overlain by L12	X	T	WG						17 Sherds, 13th/14th-cent.	
XIV F2		Robber trench	Parallel to F3?										
XIV F3		Wall	Parallel to F2?	X								2 Sherds, L12th/13th-cent.	
XIV F7		Robber trench	Cuts L8		WP							Not fully excavated.	
XIV F8		Pit		X								3 Sherds, 13th/14th-cent.	

Greyfriars (Site B)

Feature	Layer	Type of Context	Stratigraphic Relationship	Pottery	Building Material	Glass	Animal Bone	Coin	Iron	Copper	Other Small Finds	Comments	Phase/Date
XIV F9		Robber trench and wall.		X								Large robber trench. Wall face and ?construction trench preserved on western side. 5 Snerds, E-M 13th-cent.	
XIV F11		Robber trench	Cuts L12, ?L13									On roughly same alignment as F9 but much narrower. Fill continuous with L13.	
X V F14		Robber trench	= XIV F2?									Tr. XV overlain by Tr. XIV. Not well defined. Salvage work. Alignment disputed. Related to XVI F19?	
	XV L15	Mortar floor	= XIV L1?									Associated with F14 = XVI L17?	
	XVI L17	Mortar floor										= XV L15? Patchy.	
XVI F19		Robber trench										Related to XV F14?	
		F19/1											
		F19/2											
XVI F20		Robber trench	Cut by F21 (PM)									Not visible in = TR XV	
XVI F20/1													
XVII F53		Robbed wall										Parallel to F81	
		L53/1 F111											

Greyfriars (Site B)

Feature	Layer	Type of Context	Stratigraphic Relationship	Pottery	Building Material	Glass	Animal Bone	Coin	Iron	Copper	Other Small Finds	Comments	Phase/Date
	XVII	Floor	Overlies L79										
	L78												
	XVII	Floor	Overlies L80										
	L79		Overlain by L78										
	XVII	Floor	Overlain by L79, L80										
	L80												
XVII	F81	Robber trench	Overlies L80									Parallel to F53	
	F81/1												
	F81/2												
XVII	F82		= F86										
XVII	F86	Robbing										Small area of robbed material badly disturbed.	
XVIII	F38	Robbed wall	= XX F41?									Parallel to XX F46. Continuation of XXII F51.	
XIX	F39	Wall	= YX F42										
XIX	F69	Robber trench										Forms a T-junction with F70. Continuation of XX F73.	
	F69/1												
	F69/2												
	F69/3												
XIX	F70	Robber trench										Forms a T-junction with F69.	
	F70/1												
	F70/2												

Greyfriars (Site B)

Feature	Layer	Type of Context	Stratigraphic Relationship	Pottery	Building Material	Glass	Animal Bone	Coin	Iron	Copper	Other Small Finds	Comments	Phase/Date
XIX F71		Robber trench										F71 and F87 form a staggered junction.	
	F71/1												
	F71/2												
XIX F87		Robber trench										F71 and F87 form a staggered junction.	
	F87/1												
	F87/2												
XX F40		Wall										Continuation of XXII F55 floors to north of F40, no feature numbers.	
XX F41		Wall	= XVIII F38?									Continuation of XXII F51.	
XX F42		Wall	= XIX F39									Straight-joined to F43, F45.	
XX F43		Robbed wall	= XXII F47									Straight-joined to F42. Broader. Robbed on west side.	
XX F44		Wall	= XXII F48									Partially revealed.	
XX F45		Robber trench										Straight-joined to F42. Parallel to XXII F52, XXV F22.	
	F45/1												
	XX L72	Floor										Bounded by F41, F73.	

Greyfriars (Site B)

Feature	Layer	Type of Context	Stratigraphic Relationship	Pottery	Building Material	Glass	Animal Bone	Coin	Iron	Copper	Other Small Finds	Comments	Phase/Date
XX F73		Robber trench										Continuation of XIX F69.	
XX F88		Robber trench											
XXI F46		Wall										Continuation of XXIII F54. Parallel to XVIII F38.	
XXI F74		Floor										III defined.	
	XXI L75	Floor											
XXII F47		Wall	= XX F43									Continuation of F50.	
XXII F48		Robbed wall	= XX F44									Robbed at east end. Continuation of F49.	
XXII F49		Wall										Continuation of F48, straight-jointed.	
XXII F50		Wall										Continuation of F47.	
XXII F51		Robber trench										Continuation of XVIII F38, XX F41.	
XXII F52		Robber trench										Continuation of XXV F22 Parallel to XX F45.	
XXIII F54		Wall										Continuation of XXI F46.	
XXIII F55		Wall										Continuation of XX F40 Disturbed.	
	XXIII L90	Mortar floor											
XXIV F84		Robbed area										Large area of robbed material - covers three quarters of the trench.	

Greyfriars (Site 8)

Feature	Layer	Type of Context	Stratigraphic Relationship	Pottery	Building Material	Glass	Animal Bone	Coin	Iron	Copper	Other Small Finds	Comments	Phase/Date
XXV F22		Robber trench										Continuation of XXII F52. Modern disturbance to west.	
F22/1													
XXV F28		Robbed area										Internal partition East of F22. Not planned.	
	XXV L29	Floor										Succession of floors and occupation layers.	
XXV F35		Robber trench										Visible in south section only.	
XXV F56		Robber trench?										Not on plan.	
XXV F67		Wall?										Badly damaged by modern pits.	
XXVI F85		Wall											
	XXVI L86	Floor											
XXVII F91		Wall										Continuation of XXIX F109	
XXVII F92		Wall										Part of culvert?	
XXVII F93		Wall										Part of culvert?	
	XXVII L94	Tiled floor										3 Tiles resting on S. footings of F91.	
	XXVII L100	Floor											
	XXVII L102	Floor											

Greyfriars (Site B)

Feature	Layer	Type of Context	Stratigraphic Relationship	Pottery	Building Material	Glass	Animal Bone	Coin	Iron	Copper	Other Small Finds	Comments	Phase/Date
XXVIII F104		Wall										Floors to north. Northside robbed.	
XXVIII F105		Wall										Almost parallel to F104.	
XXVIII F106		Wall											
XXVIII F107		Wall											
XXIX F109		Wall										Straight- jointed to F110 Continuation of XXVII F91.	
XXIX F110		Wall										Continuation of XXVII F92.	
XXIX F111		Wall										Continuation of XXVII F93.	
XXIX F112		Wall										Southern limits not clear.	
XXX												No information.	
XXXI F115		Robbed wall											
XXXI F116		Robber trench											
XXXI F126		Robber trench										Partition wall.	
XXXI F127		Robber trench										Western edge hard to define	
XXXI F128		Robber trench										Visible in S. section. Cut about. Difficult to plot.	

Greyfriars (Site B)

Feature	Layer	Type of Context	Stratigraphic Relationship	Pottery	Building Material	Glass	Animal Bone	Coin	Iron	Copper	Other Small Finds	Comments	Phase/Date
XXXI F130		Buttress?										Hard to define. Dubious, could be a dump of demolition material.	
XXXI F133		Robber trench											
XXXI F134		Robber trench											
	XXXI L145	Floor										On one side of F134.	
	XXXI L149	Floor tiles <u>in situ</u>										16 Tiles visible in section.	
	XXXI L153					X						9 Sherds, 12th-cent.	
XXXI F158		Robber trench										Eastern edge defined.	
XXXII F117		Robber trench											
XXXII F119		Robber trench										Modern disturbance obliterated S. edge.	
XXXII F120		Robber trench										Only S. edge preserved.	
XXXII F121		Wall											
XXXII F122		Robber trench										Parallel to F121.	
	XXXII L123/8	Floor											
Trench	XXXIII												
	XXXIII L12	Garden soil				X	T					26 Sherds, E-1 13th-cent.	

Greyfriars (Site B)

Feature	Layer	Type of Context	Stratigraphic Relationship	Pottery	Building Material	Glass	Animal Bone	Coin	Iron	Copper	Other Small Finds	Comments	Phase/Date
XXXIII	L25	Final layer of Ph.I Cloister.	Cut by F21, F22, F33, F57. Overlies F72.	X								17 Sherds, E-M 13th-cent.	
XXXIII	L26	Cover last floor of Ph.II Cloister.	Overlies L50	X								1 Sherd, E-M 13th-cent.	
XXXIII	L28	Floor	Cut by F3, F13, F16, F19. = L35.	X								1 Sherd, 13th/14th-cent.	
XXXIII	L31	Upcast from Ph.II Cloister foundation trench.	Overlies F89. Overlain by F30.	Y	T							3 Sherds, 12th-cent?	
XXXIII	L32	Associated with Ph.II Cloister.	Cuts by F47. Overlies F22, L25.	X	T						L	22 Sherds, E-M 13th-cent.	
XXXIII	L35		Overlies F36. Cut by F2, F6, F7. = L28.		T								
XXXIII	L39	Pit fill	Overlies F47. Overlain by L37.	X	T							2 Sherds, 12th-cent.	
XXXIII	L40	Tip layer.	Overlies F57, F59. Cut by F34. Overlain by L15, L37.	X								3 Sherds, 15th-cent?	
XXXIII	L41	Tip layer.	Overlies F59. Overlain by L40.	X	T							3 Sherds, 13th-cent.	
XXXIII	L44	Secondary fill of F89.	Overlain by L31.	X								5 Sherds, E-M 13th-cent.	
XXXIII	L45	Rake back from F46.	Overlain by L43. Overlies L90.	X								4 Sherds, E-M 13th-cent.	
XXXIII	L50	Disturbed floor.	Overlies L51. Overlain by L26.		T								

Greyfriars (Site B)

Feature	Layer	Type of Context	Stratigraphic Relationship	Pottery	Building Material	Glass	Animal Bone	Coin	Iron	Copper	Other Small Finds	Comments	Phase/Date
	XXXIII	Tip	Overlies L54, F56.	X	T							Jetton, date: not before 1320s, more probably 1330s. 4 Sherds, E-M 13th-cent.	
	L53	layers.	Overlain by L52.										
	XXXIII	Tip	Overlies F56.	X								2 Sherds,	12th-
	L54	layer.	Overlain by L52, L53.										
	XXXIII	Tip	Overlain by L52,	X	T							18 Sherds,	E-M 13th-cent.
	L55	layer.	L54. Overlies L94.										
	XXXIII	Fill of		X								1 Sherd,	E-M 13th-cent.
	L58	wall, F57.											
	XXXIII	Fill of		X								3 Sherds,	12th-cent.
	L65	wall, F64.											
	XXXIII		Cut by F27.	X								3 Sherds,	12th-cent.
	L66		Overlain by L62.										
	XXXIII	Levelling	= F93, F101.	X								5 Sherds,	12th-cent.
	L68	from Ph.I Cloiste .											
	XXXIII	Accumula-											
	L69	tion of soil.											
	XXXIII	Floor	Overlies F72.	X								6 Sherds,	early 13th-cent.
	L73												
	XXXIII	Ash	Overlies L75.	X								1 Sherd,	12th-cent.
	L74		Overlain by L73.										
	XXXIII	Floor?		X								5 Sherds,	12th-cent.
	L75												
	XXXIII	Floor/	= L98?	X								9 Sherds,	12th-cent.
	L76	path.											
	XXXIII		= L81	X								5 Sherds,	E 13th-cent.
	L78												
	XXXIII	Ash	Overlain by L75,	X								7 Sherds,	E 13th-cent.
	L80		F79. Overlies L81, F82.										

Greyfriars (Site B)

Feature	Layer	Type of Context	Stratigraphic Relationship	Pottery	Building Material	Glass	Animal Bone	Coin	Iron	Copper	Other Small Finds	Comments	Phase/Date
	XXXIII	Surface	Overlain by L80. Overlies L83.										
	L81												
	XXXIII = L101		Overlies F85, F86. Overlain by F64, L83.	X								9 Sherds, E-M 13th-cent.	
	L84												
	XXXIII	Not defined.	Cut by F5, F47, F87. Overlain by L37.	X	T							3 Sherds, 12th-cent.	
	L88												
	XXXIII	Floor layer?	Overlain by L45, F46. Overlies L91.										
	L90												
	XXXIII	Not defined.	Overlain by L91. Overlies L93.	X								5 Sherds, 12th-cent.	
	L92												
	XXXIII = L69,		Overlain by L92.	X								8 Sherds, 12th-cent.	
	L93	L103.											
	XXXIII	Tip layer.	Overlain by L55. Overlies L96-L98.	X	T							4 Sherds, 12th-cent.	
	L94												
	XXXIII	Tip layer.	Cut by F56. Overlain by L94. Overlies L96.	X	T				X			6 Sherds, E-M 13th-cent.	
	L95												
	XXXIII	Tip layer.	Overlain by L95. Overlies L99.	X								3 Sherds, E-M 13th-cent.	
	L96												
	XXXIII	Occupation debris.	Overlain by L98. Overlies L101.	X								9 Sherds, 12th-cent.	
	L99												
	XXXIII	Levelling for Ph. I Cloister.	Overlain by F56, L95, L96, L99. Overlies L101.	X								8 Sherds, E-M 13th-cent.	
	L100												
	XXXIII	Levelling for Ph. I Cloister.	= L68, L98.	X								7 Sherds, 12th-cent.	
	L101												
	XXXIII	Accumulation of soil.	= L69, L93.	X								2 Sherds, 12th-cent.	
	L102												
XXXIII	F5	Robber trench of Choir wall.	Cut by F2, F49.		T								

Greyfriars (Site B)

Feature	Layer	Type of Context	Stratigraphic Relationship	Pottery	Building Material	Glass	Animal Bone	Coin	Iron	Copper	Other Small Finds	Comments	Phase/Date
XXXIII F7		Robber trench of Ph.II Cloister.	Cut by F8, F10. Cuts F56, F63, F64.		T							On PM concordance.	
XXXIII F17		Robber trench of Ph.II Cloister.	Cuts F63, F64.		T							On PM concordance.	
XXXIII F20		Robber trench?	Cut by F4, F11, F29. Overlies F70, F71.		T							On PM concordance.	
XXXIII F22		Robber trench of Ph.I Cloister (F63).	Cut by F33, F57. Overlain by L32. Cuts L25.	X								3 Sherds, 15th-cent?	
XXXIII F27		Gully.	Cut by F19, F70. Cuts L66. Overlain by F71.	X	T						L	15 Sherds, 12th/13th-cent.	
XXXIII F30		Hearth	Cut by F6. Overlain by F36.		T						L		
XXXIII F36		Tiled floor	Cut by F2, F6, F9. Overlain by L35. Overlies F30.		T							Tiles <u>in situ</u>	
XXXIII F46		Hearth	= L45. Overlies L90.										
XXXIII F47		Robber trench of Ph.II Cloister (F57).	Cut by F2. Overlain by L39. Cuts L32+, F64, F72.		T							On PM concordance.	
XXXIII F56		Robber Trench of Ph.I Cloister (F64).	Overlain by L53, L54. Cut by F7. Cuts L95. Overlies L100.	X								5 Sherds, L12th/13th-cent.	
XXXIII F57		Ph.II Cloister Wall.	Cuts F22, L25+, F63.									F47, Robber trench of F57.	

Greyfriars (Site B)

Feature	Layer	Type of Context	Stratigraphic Relationship	Pottery	Building Material	Glass	Animal Bone	Coin	Iron	Copper	Other Small Finds	Comments	Phase/Date
XXXIII F59		Robber trench of Choir wall.	Cut by F2, F49. Overlain by L48.										
XXXIII F63		Phase I Cloister wall.	Cut by F7, F17, F21, F57.									F22, robber trench of F63.	
XXXIII F64		Ph. I Cloister wall.	Cut by F7, F17 F47.									Closely associated with F79. F56, robber trench of F64?	
XXXIII F70		Foundation trench.	Overlain by F20. Cuts F27.	X								1 Sherd, 13th/14th-cent.	
XXXIII F71		Wall footing?	Overlain by F4, F11, F19, F20. Overlies F27.									Abuts F70.	
XXXIII F72		Stone platform.	Overlain by L25, L73. Cut by F47.	X								13 Sherds, E-M 13th-cent. Associated with a hearth.	
XXXIII F79		Stones	Overlies L87.	X								3 Sherds, 12th cent. Contemporary with L75.	
XXXIII F82		Stones	Overlain by L80. Overlies L83.									Abut F64. Similar to F72.	
XXXIII F85		Pit					X					Pre-Priory.	
XXXIII F86		Pit	Overlain by L84.	X								4 Sherds, 12th-cent. Pre-Priory	
XXXIII F87		Foundation trench of Ph. II Cloister (F57).		X								2 Sherds, 12th-cent.	
XXXIII F89		Robber trench.	Overlain by L31. Cuts L43+.	X								4 Sherds, E 13th-cent.	

A Concordance of Finds with a Description of Features and Layers

Table 6 , Littlegate (Site D)

Feature	Layer	Type of Context	Stratigraphic Relationship	Pottery	Building Material	Glass	Animal Bone	Coin	Iron	Copper	Other Small Finds	Comments	Phase/Date
Trench I													
I F1		City wall	Cuts III F105 Overlies F43	X								Post-med. additions.	
I F2		Wall	Cuts F65									Med. gate surviving until 18th C.	
I F2/1		Wall footing										Early town wall	
I F10	L10/1	Wall		X			X					Greyfriars precinct wall.	
I F13		Construction trench for F10.	Overlies L15	X			X						
I L14		Gravel	Overlies L15 Cut by F11(PM), F19(PM).	X	T, WP		X						
I L15		Ashy Layer	Overlies L26, F28, F37. Overlain by F11(PM), F13, L14.	X			X			X			
I F21		Stones	Between F1, F22										
I F22		Projection on north side of City wall.										Buttress / access to wall-walk	
I L26		Ashy layer	Overlies L29, L32. Overlain by L15.	X	T		X					L26, L28-L32 internal floors	Late 12th C.
I F28		Burnt clay	Overlies L42 Overlain by L15, L30.										
I L29		Gravel layer	Overlies L30 Overlain by F1, L26, L32.										Similar to L31.
I L30		Ashy layer	Overlies F28, L31 Overlain by L29.	X			X						

Littlegate (Site D)

Feature	Layer	Type of Context	Stratigraphic Relationship	Pottery	Building Material	Glass	Animal Bone	Coin	Iron	Copper	Other Small Finds	Comments	Phase/Date
	I L31	Gravel layer	Overlies L42 Overlain by L30									Similar to L29	
	I L32	Ashy layer	Overlies L29 Overlain by L26	X			X						
I F35		Stone-lined Chamber	Cuts F61	X								L37-L41 Backfill of F35	Late 13th / early 14th Century
I F35/1													
I F35/2		Flue											
I F36		Post hole	Cuts L40										Post-med.
I L37	Gravelly layer		Overlies L38 Overlain by L15	X					X	X		L37-L41 Backfill of F35	Late 13th to early 14th C.
I L38	Gravelly layer		Overlies L39 Overlain by L37	X			X						
I L39	Gravelly layer		Overlies L40 Overlain by L38	X	T								
I L40	Gravelly layer		Cuts F61 Cut by F36 Overlies L41 Overlain by L39	X	T		X				WF		
I L41	Clayey loam		Overlies L41/1 Overlain by L40	X						X			
I L41/1	Floor		Overlies L41/2 Overlain by L41	X									
I L41/2	Occupation Layer		Overlain by L41	X			X						
I F41/3		Paving stones	In L41/2										
I L42	Upper fill of F43.		Overlies L42/2, F44. Overlain by L31.	X			X						
I L42/1	Gravel layer												
I L42/2			Overlies F44 Overlain by L42										

Littlegate (Site D)

Feature	Layer	Type of Context	Stratigraphic Relationship	Pottery	Building Material	Glass	Animal Bone	Coin	Iron	Copper	Other Small Finds	Comments	Phase/Date
I F43		Pit/quarry	Overlain by F1 Upper fill, L42.		AS								
I F44		Pit/quarry	Overlain by L42, L42/2.	X			X						Late 12th to early 13th C.
I F45		Stone plinth	In back fill of F44.										
I F48		Burnt Stones										Associated with F35	
	I L49	Clearance layer		X	AS						S	Unstratified	
I F50		Pit	Overlain by F64	X	T		X		X		WF,S		Late 12th to early 13th C.
I F51		Pit	Cuts F63. Overlain by F64	X	T		X				S		Late 12th to early 13th C.
	L 51/1			X			X						
I F52		Stone plinth											
I F53		Pit	Cuts F61, F63.	X	T		X				S	Pre-town	Late 12th to
I F53	L53/1		Cut by F47(PM)	X	T		X				B	wall	early 13th C.
I F54		Wall										Buttress/ access to wall-walk.	
F54	L54/1			X	T		X					Associated with F35	
I F55		Large stones	Cut by F47(PM)										
II F56		Pit		X	T								
	II L57		Overlain by L3	X									
II F58		Pit		X									
II F59		Stone-lined		X									
F59	L1	Pit									B		

Littlegate (Site D)

Feature	Layer	Type of Context	Stratigraphic Relationship	Pottery	Building Material	Glass	Animal Bone	Coin	Iron	Copper	Other Small Finds	Comments	Phase Date
II F60		Ditch	= IV F121				X						
I F61		Pit/ quarry	Cut by F35, F47(PM), F53	X			X						
F61	L61/1			X			X						
F61	L61/2			X			X						
F61	L61/3						X						
I F63		Pit/ quarry	Cut by F51, F53.									Some finds attributed to construction trench of F54 may have been from F63.	
I F63/1		Narrow slot											
I F64		Oven chamber	Overlies F50,51.										Late 13th/ early 14th C.
I F64/1		Flue.											
	L64/2	Backfill of F64.		X									
	L64/3	Fill of F64.		X									
	L64/4	Floor of flue.					X						
I F65		Ditch	Cut by F2, F5(PM), F27(PM) Overlain by L24/1		T								
I F66			= F62 (PM)										
Trench	I.I												
III F104		Wall footing					X						
III F105		Pit	Cut by F1									Prehistoric pit?	
III F108		Pit	Cut by F107(PM)	X			X					Pre-town wall	Late 11th Cent.
III F110		Pit	Cuts F111?	X	T								14th Cent.
III F111		Pit	Cuts F114 Cut by F110?	X	T								
III F114		Pit	Cut by F111	X									

Littlegate (Site D)

Feature	Layer	Type of Context	Stratigraphic Relationship	Pottery	Building Material	Glass	Animal Bone	Coin	Iron	Copper	Other Small Finds	Comments	Phase/Date
Trench	IV	Contractors Excavation 1973											
IV F115	Pit	Cut by F117(PH)	X	T	VG							Features observed during contractors excavation. Not in a single trench.	15th Cent.
IV F118	Pit		X	T			X						13th Cent.
IV F119	Pit	Cuts F120	X	T,D(2)			X						
IV F120	Pit	Cut by F119	X	D (2)					X				
IV F121	Bank of Trill Hill Stream?	= II P60											

A Concordance of Finds with a Description of Features and Layers

Table 7. Selfridges' (Site SEL)

Feature	Layer	Type of Context	Stratigraphic Relationship	Pottery	Building Material	Glass	Animal Bone	Coin	Iron	Copper	Other Small Finds	Comments	Phase/Date
	L1			X								Not on plan	10th to 11th C.
F1		Pit	Below Queen St. section	X			X		X			Large no. of sherds.	10th to 11th C.
F2		Pit		X								+ Intrusive 13th- to 14th-C. pot.	12th C
F3		Pit		X									10th C. or earlier
F4		Pit		X									10th to 11th C.
F5		Pit		X	D.(T)		X					Butcher's waste?	11th C.
F6		Pit		X									11th to 12th C.
F7		Pit		X									12th C.
F8		Pit											Undated
F9		Pit		X								Intrusive 13th- to 14th-C. pot.	10th to 11th C.
F10		Pit											Undated
F11		Stone-lined well		X	(T)						(F)		13thC.
F12		Pit		X							S?	Large no. of sherds. Intrusive 13th- to 14th-C. pot.	12th C.
F13		Pit		X								15th-C. + 11th C. pot.	15th
F14		Pit		X									12th C.

Selfridges (Site SEL)

Feature	Layer	Type of Context	Stratigraphic Relationship	Pottery	Building Material	Glass	Animal Bone	Coin	Iron	Copper	Other Small Finds	Comments	Phase/Date
F15		Pit		X									12th C.
F16		Pit		X								Intrusive	12th to 16th-C. pot. 13th C.
F17		Pit		X								Large no. of sherds.	12th C.
F18		Pit		X						X	WF(2)		12th to 13th C.
F19		Pit		X	(T)								12th to 13th C.
F21		Pit											Undated
F22		Pit		X							S		10th to 11th C.
F23		Pit		X					X	X		Large no. of sherds	12th to 13th C.
F24		Pit		X	(T)							Large no. of sherds	13th C.
F25		Pit	Cut by F20(PM)	X	(T)								13th C.
F26		Pit		X									12th C.
F27		Pit		X									12th C.
F28		Pit		X									12th C.
F29		Pit		X								Over 20 Sherds	13th to 14th C.
F30		Pit		X									11th C.
F31		Pit		X	(T)								Mid 13th C.
F33		Pit		X	(T)								12th C.
F34		Pit		X	(T)								12th C.
F35		Pit		X									11th C.
F36		Pit		X									12th to 13th C.

Selfridges (Site SEL)

Feature	Layer	Type of Context	Stratigraphic Relationship	Pottery	Building Material	Glass	Animal Bone	Coin	Iron	Copper	Other Small Finds	Comments	Phase/Date
F37		Pit		X									10th to 11th C.
F38		Pit		X									11th C.
F40		Pit		X									12th C.
F41		Pit		X								13th C.	12th to
F42		Pit		X									11th C.
F43		Pit	Cuts Queen St. section	X	(T)					(X)			13th C.
F45		Pit		X								Large no. of sherds.	11th C.
F46		Pit		X					X				13th C.
F47		Pit		X	(T)								13th C.
F48		Pit						X				Nuremberg Jeton of French type, late 15th C.	Undated
F49		Well		X									11th C.
F50		Stone-lined well.		X	(T)				X			Pottery and tile lost.	Undated
F52		Pit		X								Over 20 Sherds.	12th C.
F53		Pit		X						X			12th C.
F54		Pit		X									12th to 13th C.
F55		Well		X					X				12th C.
F56		Pit		X									13th C.
F57		Pit		X					X			Over 20 Sherds.	Late 14th C.

Selfridges (Site SEL)

Feature	Layer	Type of Context	Stratigraphic Relationship	Pottery	Building Material	Glass	Animal Bone	Coin	Iron	Copper	Other Small Finds	Comments	Phase/Date
F58		Pit		X									10th to 11th C.
F59		Pit		X									10th to 11th C.
F61		Pit		X									12th C.
F62		Pit		X									13th to 14th C.
F63		Pit		X							S(4)		10th to 11th C.
F64		Pit		X →									13th C.
F65		Pit		X								Over 20 Sherds.	13th C.
F66		Pit		X									12th C.
F67		Pit		X					X				12th C.
F68		Pit		X								Over 20 Sherds.	12th to 13th C.
F69		Pit		X									11th to 12th C.
F71		Pit		X									12th C.
F72		Pit		X								Large no. of sherds.	12th C.
F73		Pit		X								Large no. of sherds.	12th C.
F74		Pit		X									10th to 11th C.
F75		Pit		X									11th to 12th C.
F76		Pit		X									11th to 12th C.
F77		Pit		X									11th C.
F78		Pit		X									10th to 11th C.

Selfridges (Site SEL)

Feature	Layer	Type of Context	Stratigraphic Relationship	Pottery	Building Material	Glass	Animal Bone	Coin	Iron	Copper	Other Small Finds	Comments	Phase/Date
F79		Pit		X									12th C.
F80		Pit		X	(T)								12th to 13th C.
F81		Pit		X									11th C.
F82		Pit		X									12th C.
F84		Pit		X									12th C.
F85		Pit		X									12th C.
F86		Pit		X	D, (T)								10th to 11th C.
F88		Pit		X	(T)							Large no. of sherds.	15th C.
F89		Pit		X									11th C.
F90		Pit			(T)							Marked as being 15th C. on plan.	12th to 15th C.
F91		Pit		X									10th to 11th C.
F92		Pit		X	(T)						S		10th to 11th C.
F93		Pit		X									12th C.
F94		Pit		X	(T)							Finds lost	Undated
F95		Pit		X									10th to 11th C.
F96		Pit		X	(T)						S		10th to 11th C.
F97		Stone-lined pit.									VG(2)	Feature marked 'Capes, St. Ebbe's	14th
												Approximate location on plan.	

A Concordance of Finds with a Description of Features and Layers

Table B , Westgate (Site W)

Feature	Layer	Type of Context	Stratigraphic Relationship	Pottery	Building Material	Glass	Animal Bone	Coin	Iron	Copper	Other Small Finds	Comments	Date
F1		Pit		X	(T)								15th C.
F2		Pit	Cut by F3	X								Little cut (8 Sherds). Not fully excavated.	11th C.
F3		Pit	Cuts F2									A single find. Not fully excavated. Not on plan.	Undated
F4		Hearth											Undated
(F5)		Barbican ditch.										Published, 'Oxford Castle', <u>Oxoniensia</u> , x11 (1976), 244.	
F6		E/W Section	North side of Church St.									Not fully recorded. No date indicated on plan.	
F8		N/S Section	Across Church St.									Not fully recorded. No date indicated on plan.	
F9		Ditch	Overlies F10	X	(T)							Seen in section only. 9 Sherds.	13th C.
F10		Pit	Overlain by F9	X								11 Sherds.	13th C.
F12		Oven, & associated structures.		X								Cut about 3 Sherds.	12th C.
"	L1												
"	L2												
F13		Pit		X								20 Sherds.	14th C.
F14		Pit		X								7 Sherds.	15th C.

Westgate (Site W)

Feature	Layer	Type of Context	Stratigraphic Relationship	Pottery	Building Material	Glass	Animal Bone	Coin	Iron	Copper	Other Small Finds	Comments	Date
F16		Pit		X	(T)							38 Sherds.	13th C.
F17		Pit?		X								No feature description. 32 Sherds.	13th C.
F23		Rectangular pit.		X	(T)		(X)				R	'Good pot group'. 185 Sherds.	13th to 14th C.
(F24)												Published, 'Oxford Castle', <u>Oxonensia</u> , x11 (1976), 244.	
F27		Pit?		X								No feature description. 17 Sherds.	13th C.
(F28)												Published, 'Oxford Castle', <u>Oxonensia</u> , x11 (1976), 244.	
F29		Pit		X	(T)							12 Sherds.	13th C.
F30		Pit		X			(X)					48 Sherds.	13th C.
F31		Pit		X			(X)					59 Sherds.	13th C.
F32		Pit		X			(X)					3 Sherds.	12th C.
F33		Pit		X			(X)						12th C.
F34		Pit		X					X			153 Sherds.	12th C.
F35		Pit		X	(T)		(X)						12th C.
F36		Pit		(X)			(X)					Pot recorded in site note book. Not on plan.	Undated
F37		Pit		X	(T)		(X)					16 Sherds.	14th to 15th C.

Westgate (Site W)

Feature	Layer	Type of Context	Stratigraphic Relationship	Pottury	Building Material	Glass	Animal Bone	Coin	Iron	Copper	Other Small Finds	Comments	Date
F38		Pit										No finds Not on plan.	Undated
F39		Pit	Cuts F40	X	(T)							33 Sherds.	12th C.
F40		Pit	Cut by F39	X								6 Sherds.	11th C.
F41		Pit		X			(X)					Very little pot. 4 Sherds.	12th C.
F42		Hearth OF OVEN	Under north pavement of Castle St.	X	(T)							Close by F47, F52. 7 Sherds.	13th C.
F43		Road surfaces	Under Castle St.									Not planned. Information better seen in Section F54. Leather sole published Oxford Castle Report.	
F44		Pit		X			(X)					Little pot	12th C.
F46		Pit		X	(T)		(X)					19 Sherds.	12th C.
F47		Hearth	Under north pavement of Castle St.									Close by F42. Not fully recorded. Not on plan.	Undated
F49		Pit/ ditch?		X								Seen in section only. Not fully recorded. Not on plan.	Mid Saxon (1 Sherd)

Westgate (Site W)

Feature	Layer	Type of Context	Stratigraphic Relationship	Pottery	Building Material	Glass	Animal Bone	Coin	Iron	Copper	Other Small Finds	Comments	Date
F50		<u>N/S Section of Church St</u>					(X)					N/S Section published, 'Excavations at Oxford 1970', <u>Oxonfensia</u> , xxxvi (1971), Fig. 5; Pl. III A.	
	L a & b												
Surface 1		Modern tarmac											
	L 1/2												
<u>South Side of Modern Services</u>													
	L2/1		= L9/1	X									14th to 15th C. (9 Sherds)
Surface 2												Two sections recorded:	
	L2/2											1. N/S, right angle.	14th to 15th C.
	L3/1		= L10/1	X								2. NE/SW, Oblique.	(5 Sherds)
Surface 3													
	L3/2												
	L4/1			X			(X)					Recording system: L2/1	11th C. (18 Sherds)
Surface 4												accumulation on Surface 2.	
	L4/2											L2/2 make-up to form new road.	11th C. (37 Sherds)
	L5/1			X					X				
Surface 5													
	L5/2											No date indicated on plan.	
	L6/1												
Surface 6				X			(X)				R	25 Sherds	Mid 11th C.
	L6/2			X								21 Sherds	Early 11th C.
	L6/3			X			(X)				S, R	8 Sherds	11th C.
	L7/1												11th C.
Surface 7													
	L7/2		Cut by A F1556?										
	L8/1												
Surface 8			Overlies F62.										
	L8/2		Cut by F61, F64, A F1556.	X	(T)						S(2)		

Westgate (Site W)

Feature	Layer	Type of Context	Stratigraphic Relationship	Pottery	Building Material	Glass	Animal Bone	Coin	Iron	Copper	Other Small Finds	Comments	Date
Surface 5	L5/2												
	L6/1												
Surface 6	L6/2												
	L7/1												
Surface 7	L7/2												
	L8/1												
Surface 8	L8/2												
	L9/1												
Surface 9	L9/2			X								2 Sherds	Late 11th C.
	L10/1												
Surface 10	L10/2												
	L11/1												
Surface 11	L11/2			X								1 Sherd	11th C.
	L12/1			X								1 Sherd	11th C.
Surface 12	L12/2												
	L13/1			X								1 Sherd	11th C.
Surface 13	L13/2												
	L14/1												
Surface 14	L14/2												
	L15/1												
Surface 15	L15/2												
	L16/1			X								1 Sherd	11th C.
Surface 16	L16/2												
	L16a/1												
Surface 16a	L16a/2												
	L17/1												

Westgate (Site W)

Feature	Layer	Type of Context	Stratigraphic Relationship	Pottery	Building Material	Glass	Animal Bone	Coin	Iron	Copper	Other Small Finds	Comments	Date
Surface 17	L17/2												
	L18/1												
Surface 18	L16/2		Cut by F53, F55.										
<u>South Side</u>													
	L19/1												
Surface 19	L19/2												
	L20/1			X								3 Sherds	9th to 10th C.
Surface 20	L20/2												
	L21/1												
Surface 21	L21/2												
	L22/1												
Surface 22	L22/2												
	L23/1												
Surface 23	L23/2												
	L24/1												
Surface 24	L24/2												
	L25/1			(X)			(X)					Oyster shells. Pot not found during post excavation.	
Surface 25	L25/2												
	L26/1			(X)			(X)					Oyster shells.	
Surface 26	L26/2												
	L27/1			X								2 Sherds	11th C.
Surface 27	L27/2												
	L28/1												

Westgate (Site N)

Feature	Layer	Type of Context	Stratigraphic Relationship	Pottery	Building Material	Glass	Animal Bone	Coin	Iron	Copper	Other Small Finds	Comments	Date
Surface 28	L28/2 L29/1												
Surface 29	L29/2 L30/1			X								1 Sherd	11th C.
				X								1 Sherd	11th C.
Surface 30	L30/2 L31/1												
Surface 31	L31/2 L32/1												
				X								1 Sherd	11th C.
Surface 32	L32/2												
F55		Post hole	In Section F54 Cuts Surface 18										
F56		Pit	Under Castle St. In Section F54 Cuts Surfaces 26-32.	X			(X)				R	30 Sherds	Late 11th C.
F57		Pit	Under Castle St. In Section F54, Cuts surfaces 26-32.	X								1 Sherd	8th to 10th C.
F58		Pit	Under Castle St. In Section F54, Cuts surfaces 26-32.	X								15 Sherds	12th C.
F59		Pit		(X)			(X)		X			Iron knife, published <u>Oxoniensia</u> x11 (1976), 297, Fig.26, No. 2.	Undated
(F60)												Published 'Oxford Castle', <u>Oxoniensia</u> , x11 (1976), 244.	

Westgate (Site W)

Feature	Layer	Type of Context	Stratigraphic Relationship	Pottery	Building Material	Glass	Animal Bone	Coin	Iron	Copper	Other Small Finds	Comments	Date
F61		Post hole	In Section F50, cuts Surface 8.	(X)								Pit not found during post-excavation.	
F62		Post hole	In Section F50, overlain by Surface 8.										
F64		Post hole	In Section 50, cuts Surface 8.										
F65		Post hole	Under north pavement of Church St. Cu's A F1556?									Not on plan.	
F69		Pit?		X	(T)							No feature description 6 Sherds.	13th to 14th C.
F73		Section Church St.										Not fully recorded. No date indicated on plan.	
(F74-F77)												Published, 'Oxford Castle', <u>Oxoniensia</u> , xli (1976), 253.	
F78		Pit		X								2 Boxes of pottery.	12th C.
F79		Pit		X			(X)					Small pot group.	12th C.
F81		Pit?		X								No feature description. Not on plan. Small pot group.	12th C.
F82		Pit?		X								No feature description. Not on plan. 4 Sherds.	11th to 12th C.
F83		Stone-lined pit.		X			(X)					Marked as being 13th C. on plan.	11th to 12th C.

Westgate (Site W)

Feature	Layer	Type of Context	Stratigraphic Relationship	Pottery	Building Material	Glass	Animal Bone	Coin	Iron	Copper	Other Small Finds	Comments	Date
F84		Pit		X			(X)					5 Sherds.	12th C.
F85		Pit	Under Church St.	X								Not planned. 2 Sherds.	11th to 12th C.
F86		E/W Boundary										2 Phases. Post-med. and med.(?)	
"	L1	wall										Not on plan.	15th to
"	L2			X								2 Sherds.	16th C.
F87		Timber slot or ditch		X			(X)					15 Sherds.	11th C.
F88		Pit		Y								Not planned. Under boundary wall? 5 Sherds.	15th to 16th C.
F89		Pit		X	(T)	VG(2)				X(2),R		Not planned	13th to 14th C.
F91		Pit		X								Not planned. 64 Sherds.	12th C.
F92		Pit										Not on plan	Undated
F93		Burial										Related to Greyfriars Church. No report. Skull fragments only.	
F94		Burial										Related to Greyfriars Church. No report. Thigh bones only.	
F9C		Road		X								Revealed	12th to
"	L1	surfaces										during	13th C.
"	L2			X								piling.	
"	L3			X								Pot recorded	
"	L4											on site, not found during post-excavation. 3 Sherds only.	

Westgate (Site W)

Feature	Layer	Type of Context	Stratigraphic Relationship	Pottery	Building Material	Glass	Animal Bone	Coin	Iron	Copper	Other Small Finds	Comments	Date
F96		Pit		X								4 Sherds. Incorrectly located as lying beneath Church St.	12th C.
F97		Pit	Cut by 98.	X			(X)				S, R	28 Sherds. Incorrectly located as lying beneath Church St.	11th to 12th C.
F98		Pit?	Cuts F97.									Not on plan.	
F99		Pit		X								Good pot group. Planned as overlying Site A, but probably further east.	13th C.
F100		Burial										Related to Greyfriars Church. No report. Incomplete.	
F101		Burial										Related to Greyfriars Church. No report. Incomplete.	
F103		Pit		X			(X)					56 Sherds. Planned as overlying Site A but probably further east.	12th C.
F104		Pit		X								8 Sherds. Planned as overlying Site A but probably further east.	11th C.

Westgate (Site W)

Feature	Layer	Type of Context	Stratigraphic Relationship	Pottery	Building Material	Glass	Animal Bone	Coin	Iron	Copper	Other Small Finds	Comments	Date
F105		Pit		X								61 Sherds.	12th C.
F106A		Pit		X			(X)					Number used twice. 3 Sherds. Planned as overlying Site A but probably further east.	12th C.
F106B		Burial										Related to Greyfriars Church. No report. Fragmentary.	
F107		Pit		X								Lack of feature description. Not on plan. 49 Sherds.	13th C.
F103		Pit		X								Not planned. 46 Sherds.	12th C.
F110		Pit	Cut by Greyfriars wall, B XIII F1		WP							On Site B, Tr. XIII Evidence plan. 37 Sherds.	Undated
F111		Stone-lined well										Not on plan	Undated
F113-116		Numbers not used.											

LIST OF CONTENTS FICHE I

CONCORDANCE OF FINDS WITH A DESCRIPTION OF FEATURES AND LAYERS

by MAUREEN MELLOR AND CLAIRE HALPIN

			Fiche
31-34 Church Street, Site A	Table 4		A3
Greyfriars Site B	Table 5		G12
Littlegate Site D	Table 6		F6
Selfridges Site SEL	Table 7		F11
Westgate Site W	Table 8		G2

A list of the abbreviations used in the Concordance Tables is given at the beginning of the Finds Reports in print. Photocopies of the microfiche can be obtained from the Oxford Archaeological Unit, 46 Hythe Bridge Street, Oxford, OX1 2EP.